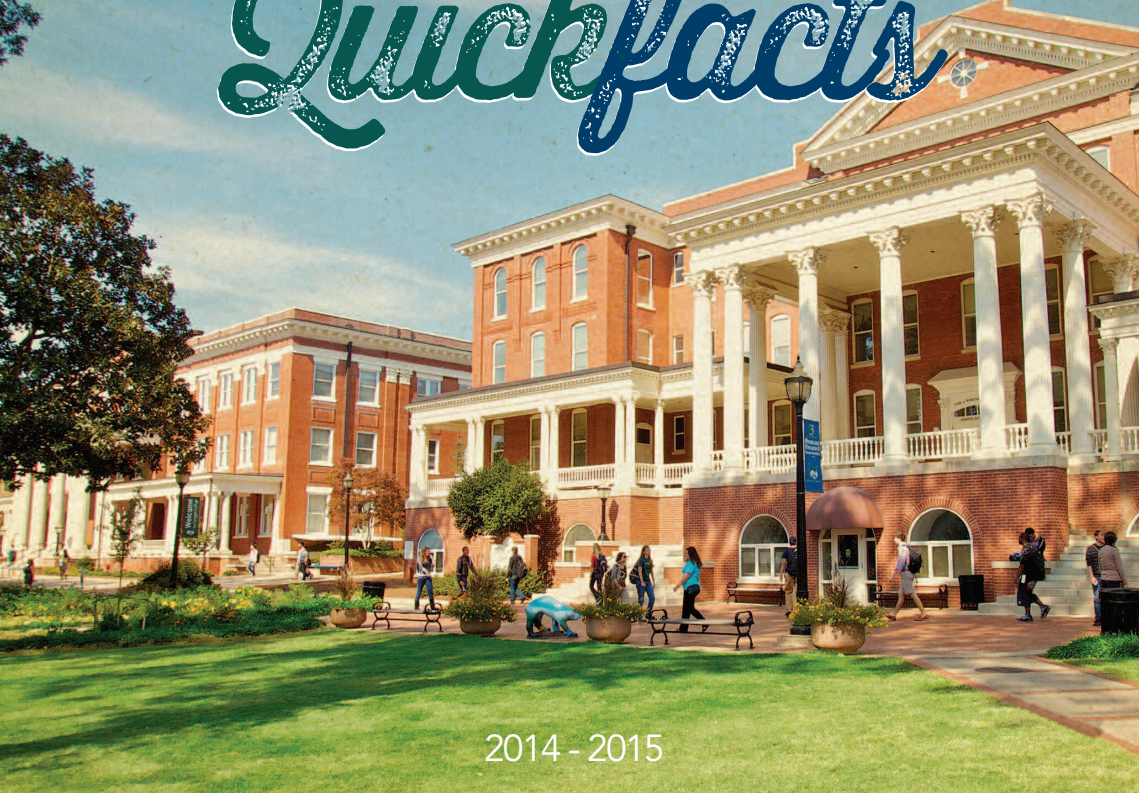




GEORGIA  
COLLEGE

1889 - 2014

# *Quick facts*



2014 - 2015





# Quickfacts

## About Georgia College

Georgia College is Georgia's designated public liberal arts university, combining the educational experience expected at esteemed private liberal arts colleges with the affordability of public higher education.

Georgia College offers a distinctive learning environment with innovative teaching, top faculty, distinguished programs and opportunities to learn beyond the classroom.

- Undergraduate students enjoy special opportunities to participate in research alongside faculty, opportunities seldom available at larger universities.
- Service learning projects, internships and study abroad programs give students hands-on, real-world experience.
- A focus on civic engagement exists at Georgia College, evidenced by Georgia College's inclusion in the President's Higher Education Community Service Honor Roll – with distinction.

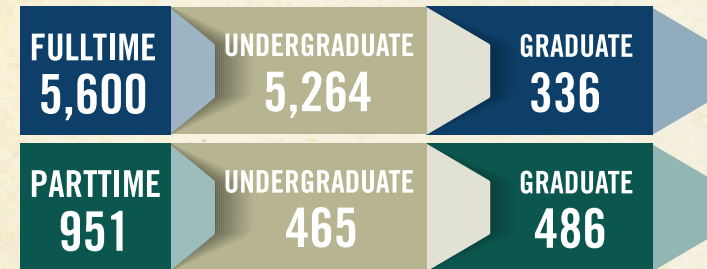
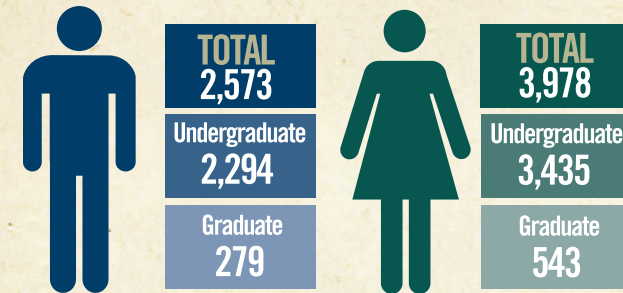
## Locations

- The main campus, located in Milledgeville, was founded in 1889. The 2014-2015 school year will celebrate the institution's 125th anniversary.
- The Center for Graduate and Professional Learning is in the historic Thomas Jefferson building in downtown Macon.
- Graduate and Professional Education courses are available at Robins Air Force Base in Warner Robins.
- A growing number of programs are offered online or with online components, including our highly ranked WebMBA program.





## 2013 Fall Enrollment Facts





## Rankings and Awards

- > In addition to being named the "Number One Safest Campus in Georgia", Georgia College was named as a "Best Southeastern College" by The Princeton Review, placing Georgia College in an elite group of the top 25 percent of the nation's 2,500 four-year colleges.
- > One of the best master's universities in the South, according to U.S. News & World Report.
- > Named one of the top 50 wireless campuses named by Intel.
- > The only public institution named as a "College of Distinction" in Georgia for the 8th consecutive year.
- > The Corporation for National and Community Service named Georgia College to the 2013 President's Higher Education Community Service Honor Roll.



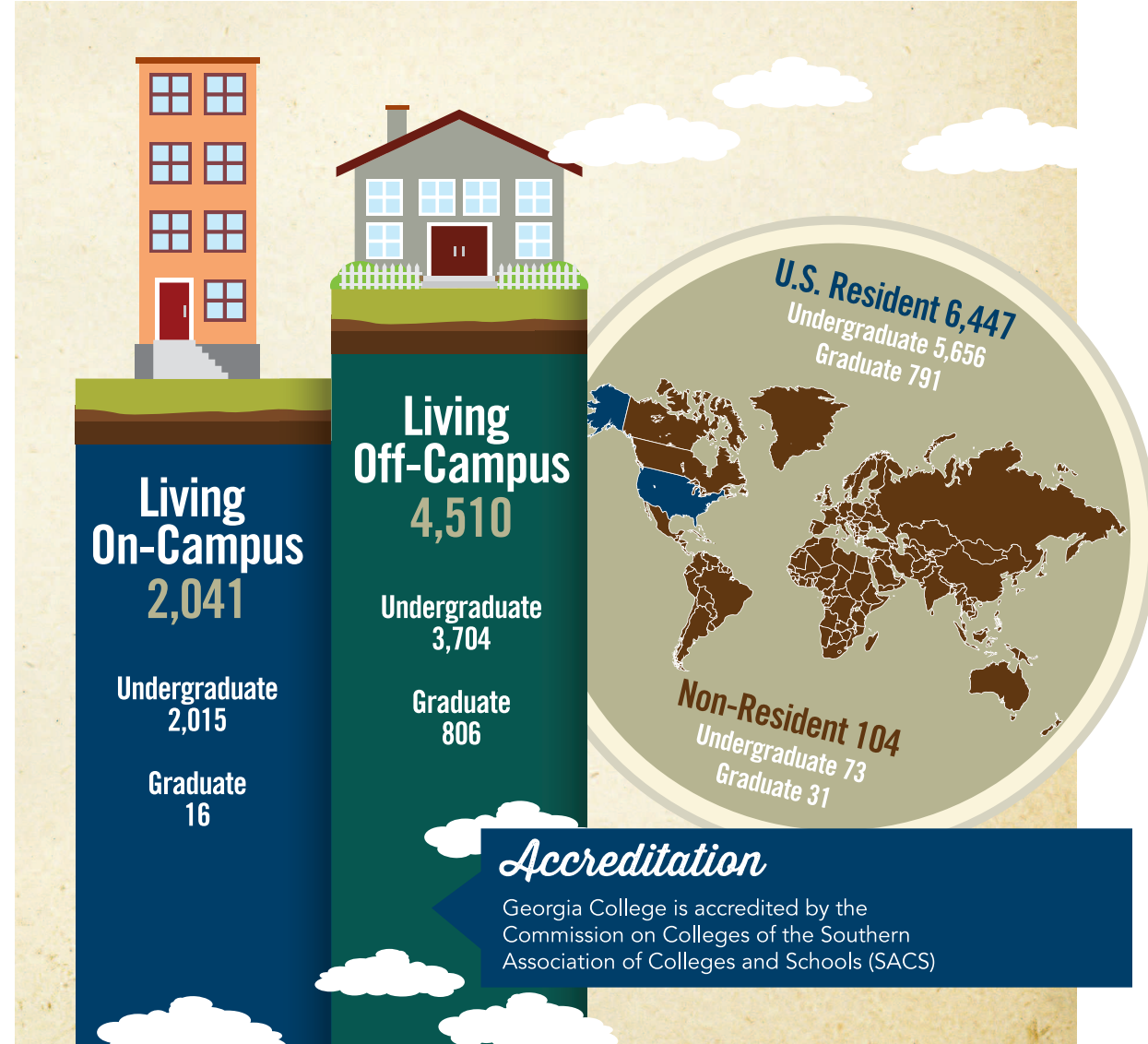
## In-State

	UNDERGRADUATE	GRADUATE	TOTAL
Atlanta Area	2,679	111	2,790
East	574	69	643
West	187	32	219
North	783	62	845
Central	1,172	484	1,656
South	90	6	96

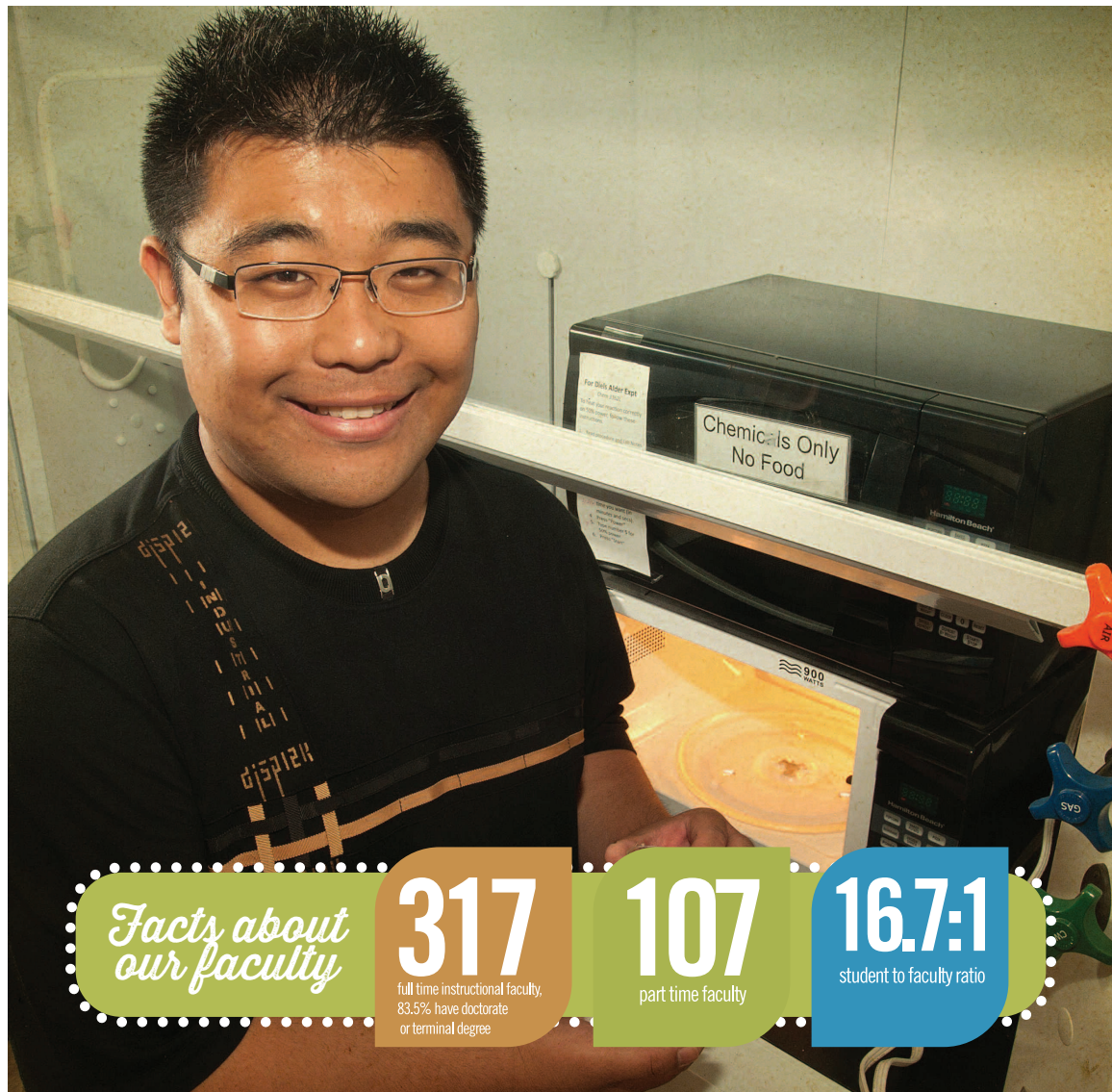
*Georgia recruiting areas*  
as defined by the Admissions Office

Central	1,802	573	2,375
North	3,364	162	3,526
South	319	29	348









*Facts about our faculty*

**317**

full time instructional faculty,  
83.5% have doctorate  
or terminal degree

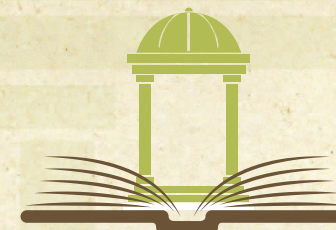
**107**

part time faculty

**16.7:1**

student to faculty ratio

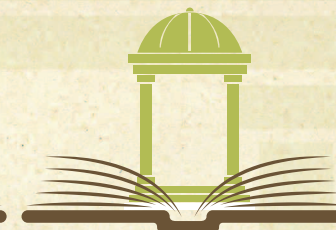
## By Colleges



**ARTS AND SCIENCES**

**2,873**

Undergraduate 2705  
Graduate 168



**BUSINESS**

**1,597**

Undergraduate 1389  
Graduate 208



**EDUCATION**

**671**

Undergraduate 383  
Graduate 288



**HEALTH SCIENCES**

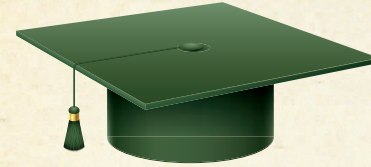
**1,410**

Undergraduate 1252  
Graduate 158





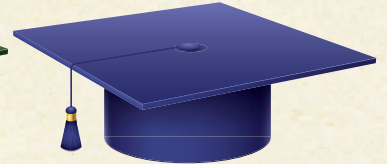
## Degrees Conferred



### ARTS AND SCIENCES

**601**

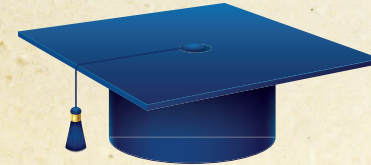
Undergraduate 542  
Graduate 59



### BUSINESS

**366**

Undergraduate 257  
Graduate 109



### EDUCATION

**276**

Undergraduate 82  
Graduate 194



### HEALTH SCIENCES

**327**

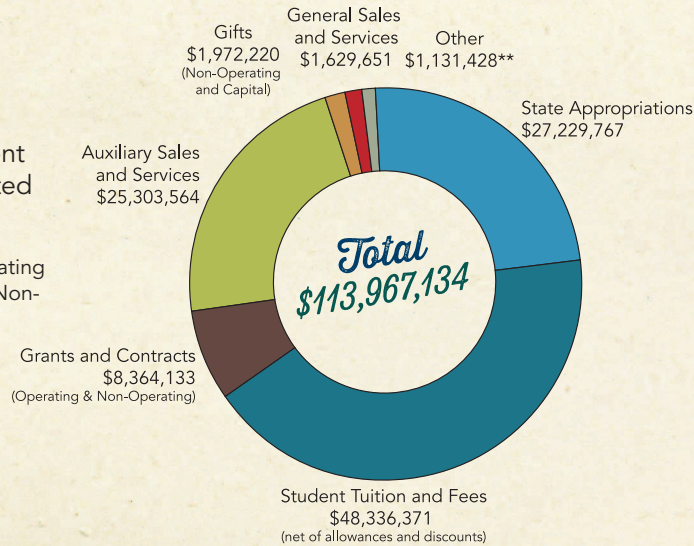
Undergraduate 258  
Graduate 69



# Institutional Finances

Revenues for FY2013 (most recent completed fiscal year), per audited Annual Financial Report:

\*\*Includes Rents/ Royalties, Other Operating Revenues, Investment Income & Other Non-operating Revenues.



# Tuition and Fees



\*7-15 hrs. per semester

\*\*12+ hrs. per semester; Macon campus rates

### Other Fees:

Housing: Rates start at \$2,930 per semester (4-person suite)  
Meal Plan: \$1,836 - \$2,040 per semester

# Colleges and Majors

## The College of Arts and Sciences

Art	BA
Biology	BS, MS
Chemistry	BS
Creative Writing	MFA
Criminal Justice	BA, MSCJ
English	BA, MA
Environmental Sciences	BS
French	BA
Geography	BA
History	BA, MA
Liberal Studies	BA
Mass Communication	BA
Mathematics	BS
Music	BA
Music Education	BME, MMed
Philosophy	BA
Physics	BA
Political Science	BA
Psychology	BS
Public Administration	MPA
Rhetoric	BA
Sociology	BA
Spanish	BA
Theatre	BA

## The J. Whitney Bunting College of Business

Accounting	BBA, MAcc
Business Administration	MBA
Computer Science	BS

Economics	BA, BS
Logistics & Supply Chain Management	MLSCM
Management Information Systems	BBA, MMIS
Management	BBA
Marketing	BBA

## The College of Health Sciences

Art Therapy	MA
Athletic Training	BS
Community Health	BS
Exercise Science	BS
Kinesiology	Med, MAT
Music Therapy	BMT, MMT
Nursing	BSN, MSN, DNP
Outdoor Education	BS

## The John H. Lounsbury College of Education

Early Childhood Education	BS, MEd, EdS
Educational Leadership	Med, EdS
Instructional Technology	MEd
Library Media	MEd
Middle Grades Education	BS, MAT, MEd, EdS
Reading, Literacy and Language	MEd
Secondary Education	MAT, MEd, EdS
Special Education	BS, MAT, MEd, EdS

## Leadership

**Dr. Steve Dorman**  
President

**Dr. Kelli Brown**  
Provost and Vice President for Academic Affairs

**Ms. Susan Allen**  
Interim Vice President for Administration and Operations

**Dr. Bruce Harshbarger**  
Vice President for Student Affairs

**Ms. Monica Delisa**  
Vice President for University Advancement

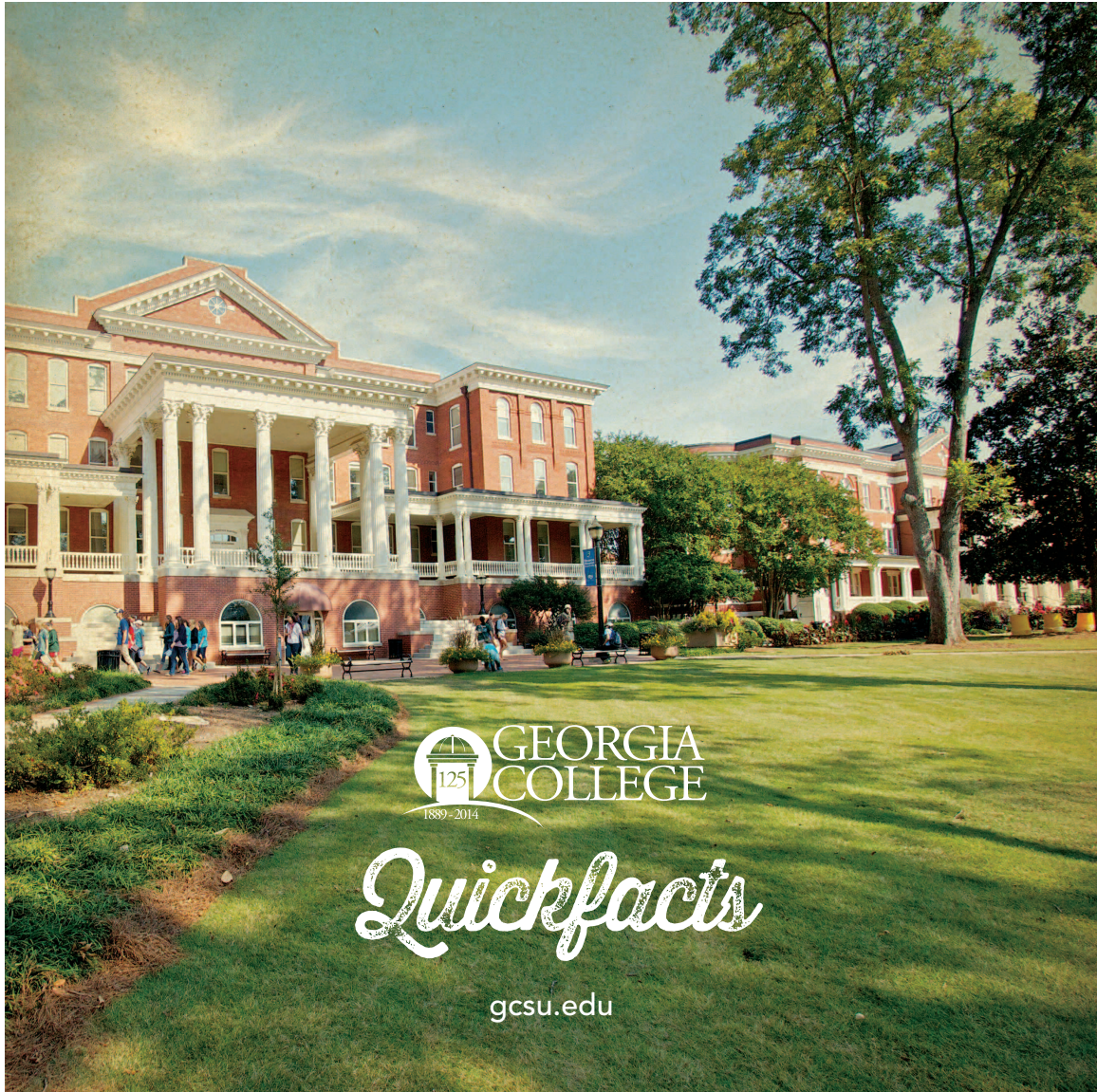
**Mr. Kenneth J. Procter**  
Dean of the College of Arts and Sciences

**Dr. James E. Payne**  
Dean of the J. Whitney Bunting College of Business

**Dr. Olufunke Fontenot**  
Interim Dean of the John H. Lounsbury College of Education

**Dr. Sandra Gangstead**  
Dean of the College of Health Sciences





 GEORGIA  
COLLEGE  
1889-2014

*Quickfacts*

[gcsu.edu](http://gcsu.edu)