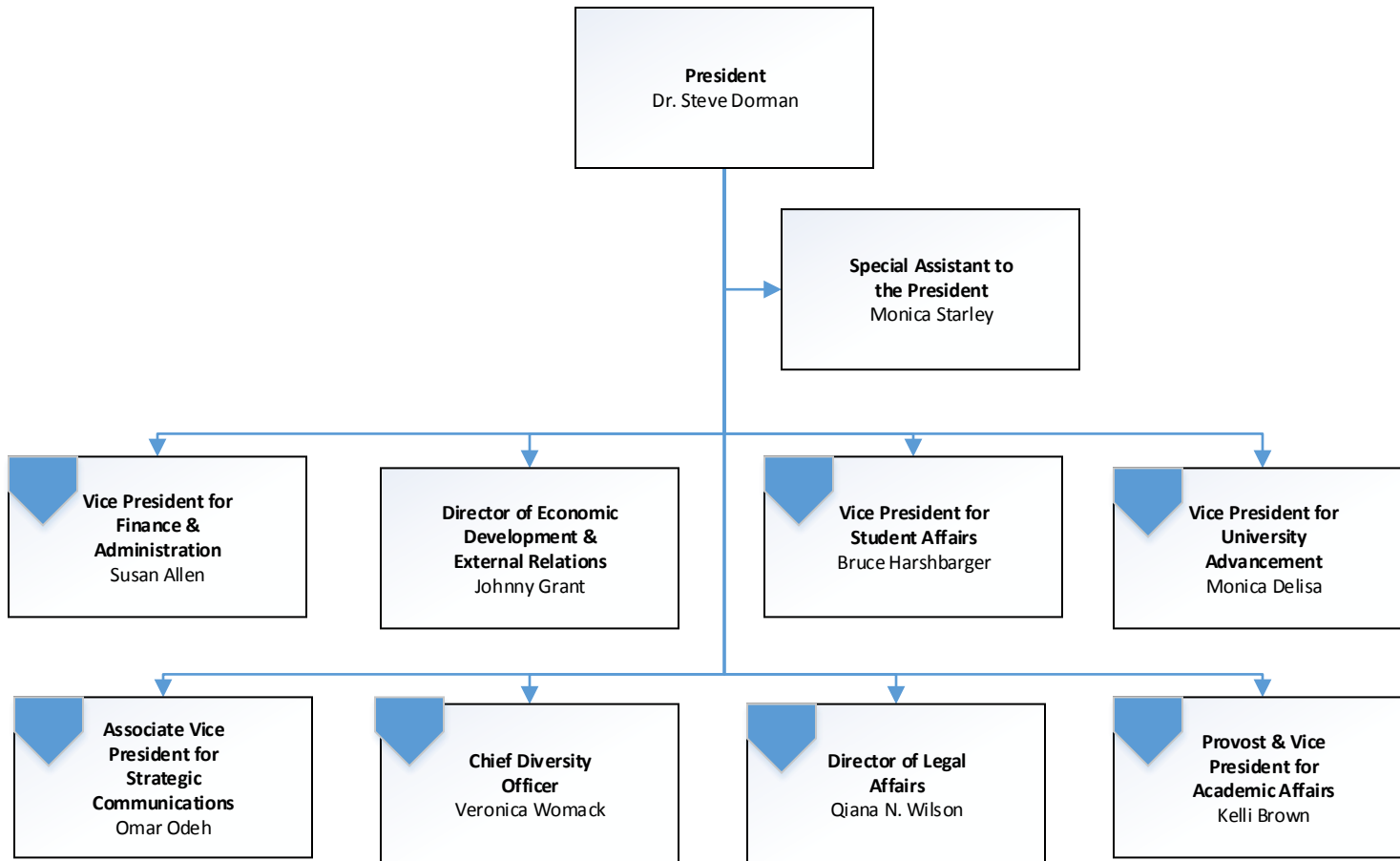


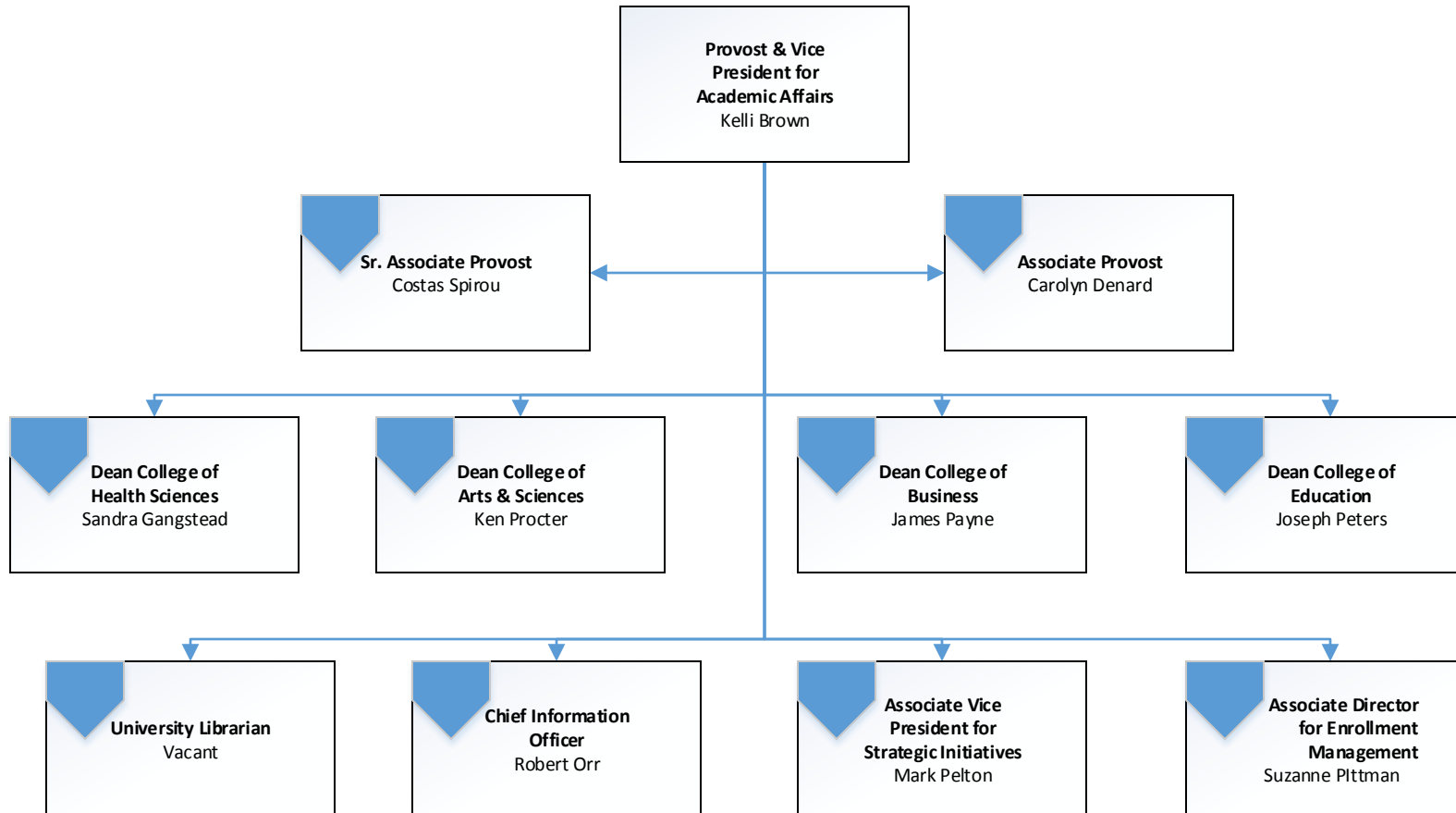


*Administration*



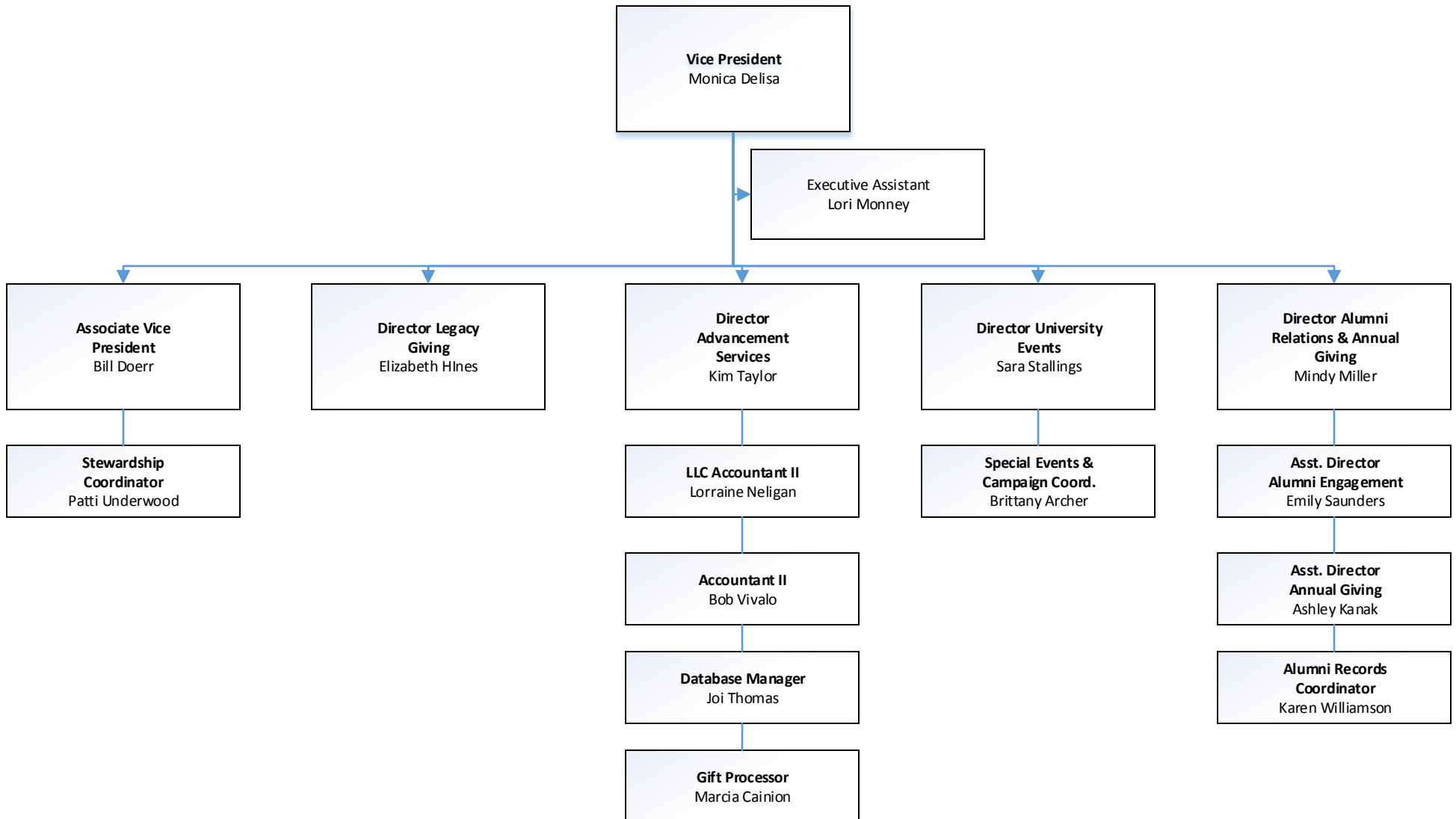


*Academic Affairs*



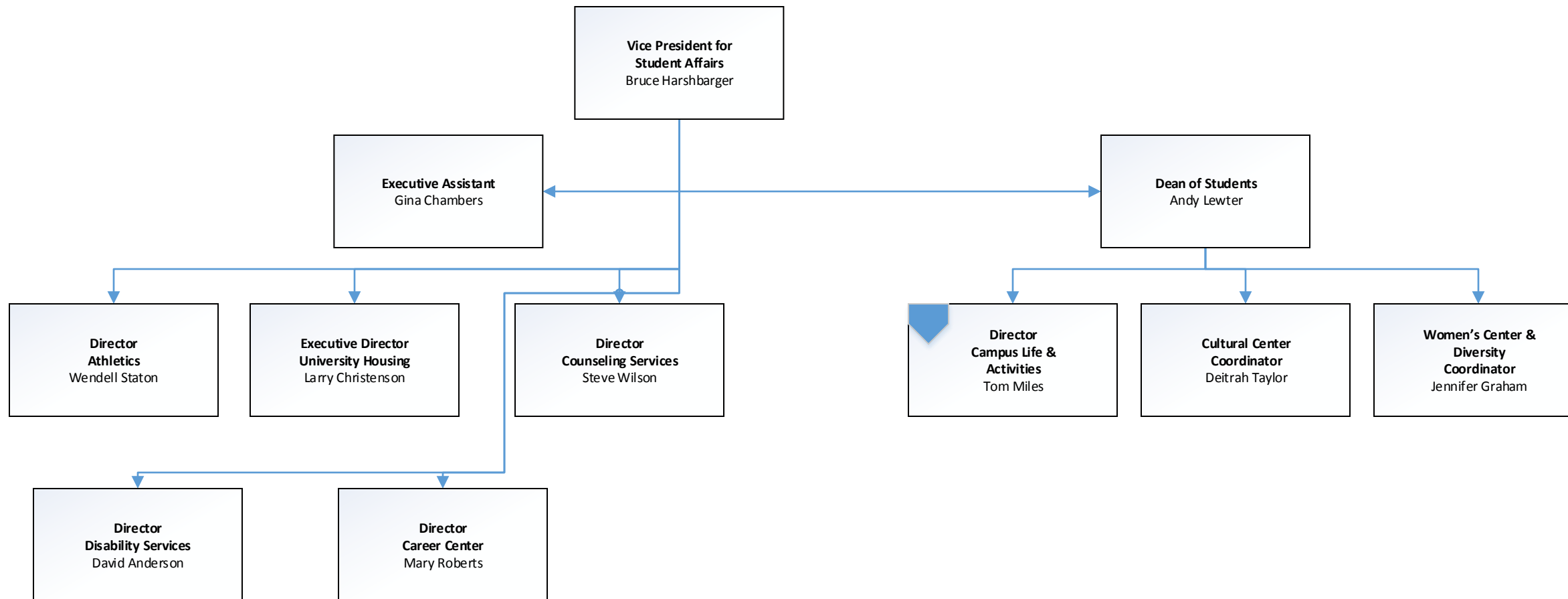


*University Advancement*



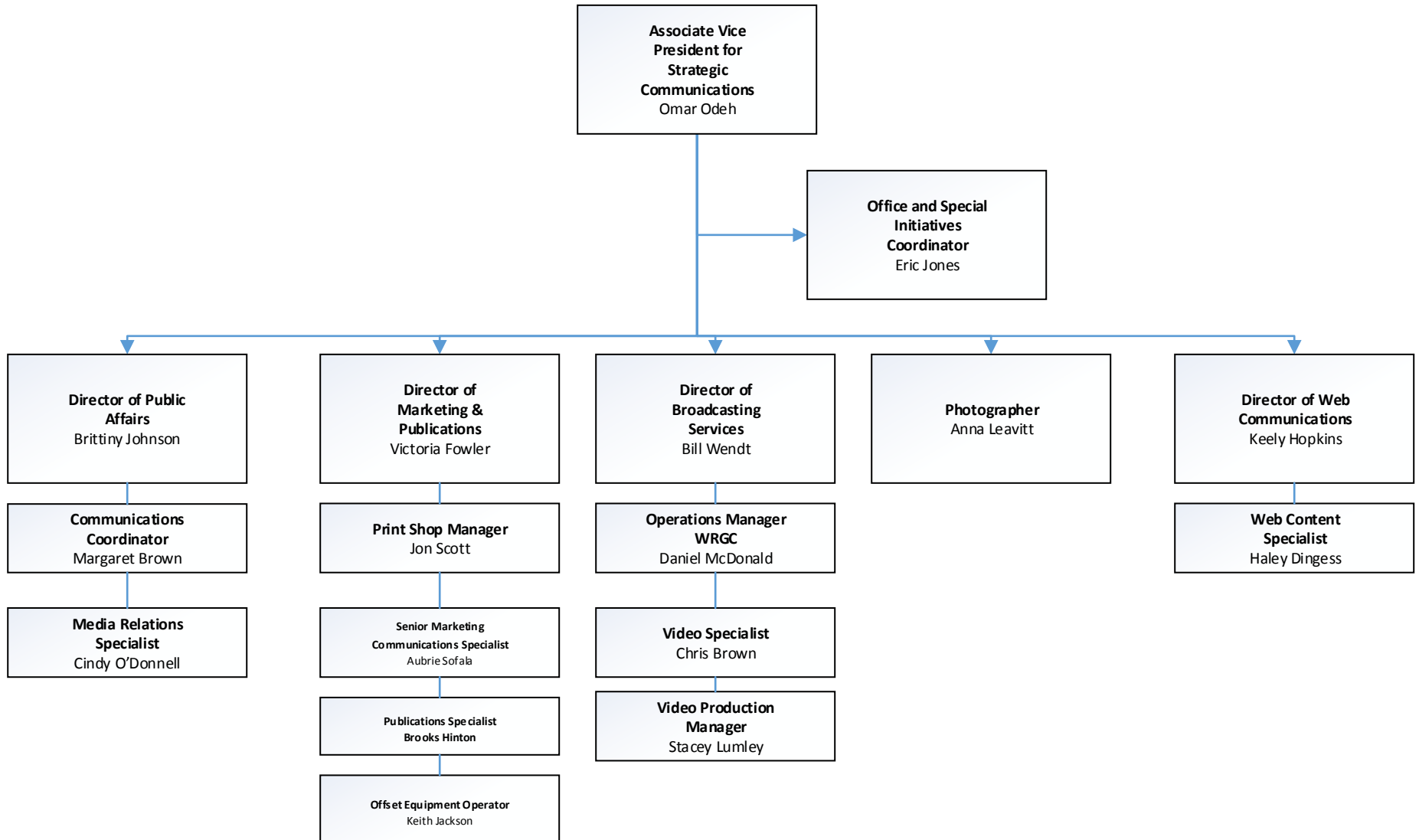


## Student Affairs



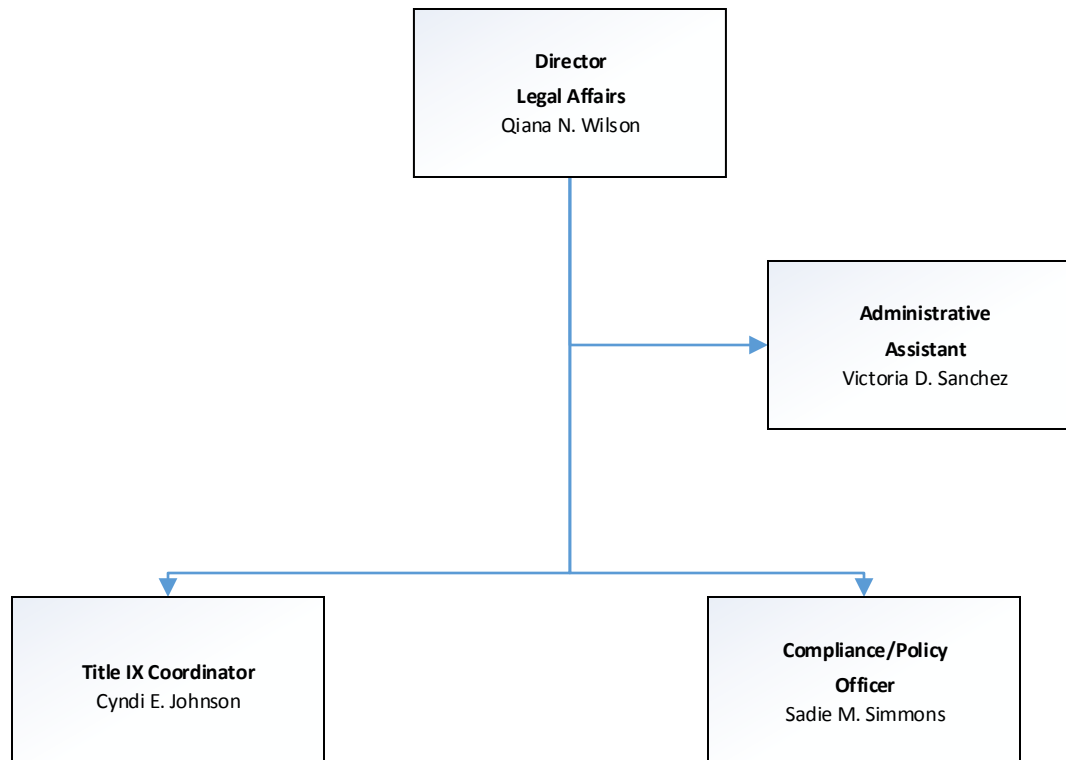


**GEORGIA COLLEGE**  
GEORGIA'S PUBLIC LIBERAL ARTS UNIVERSITY  
*University Communications*



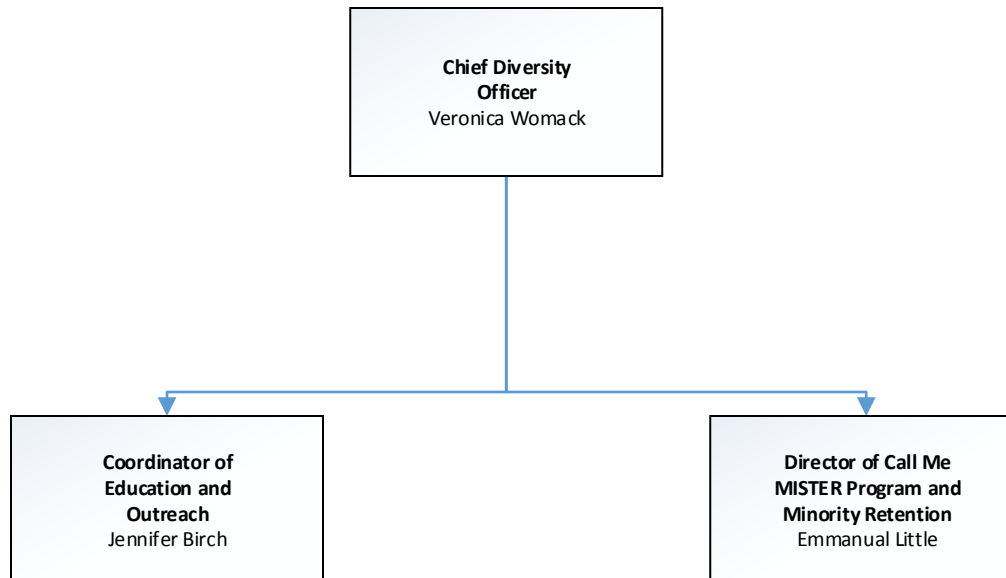


*Office of Legal Affairs*



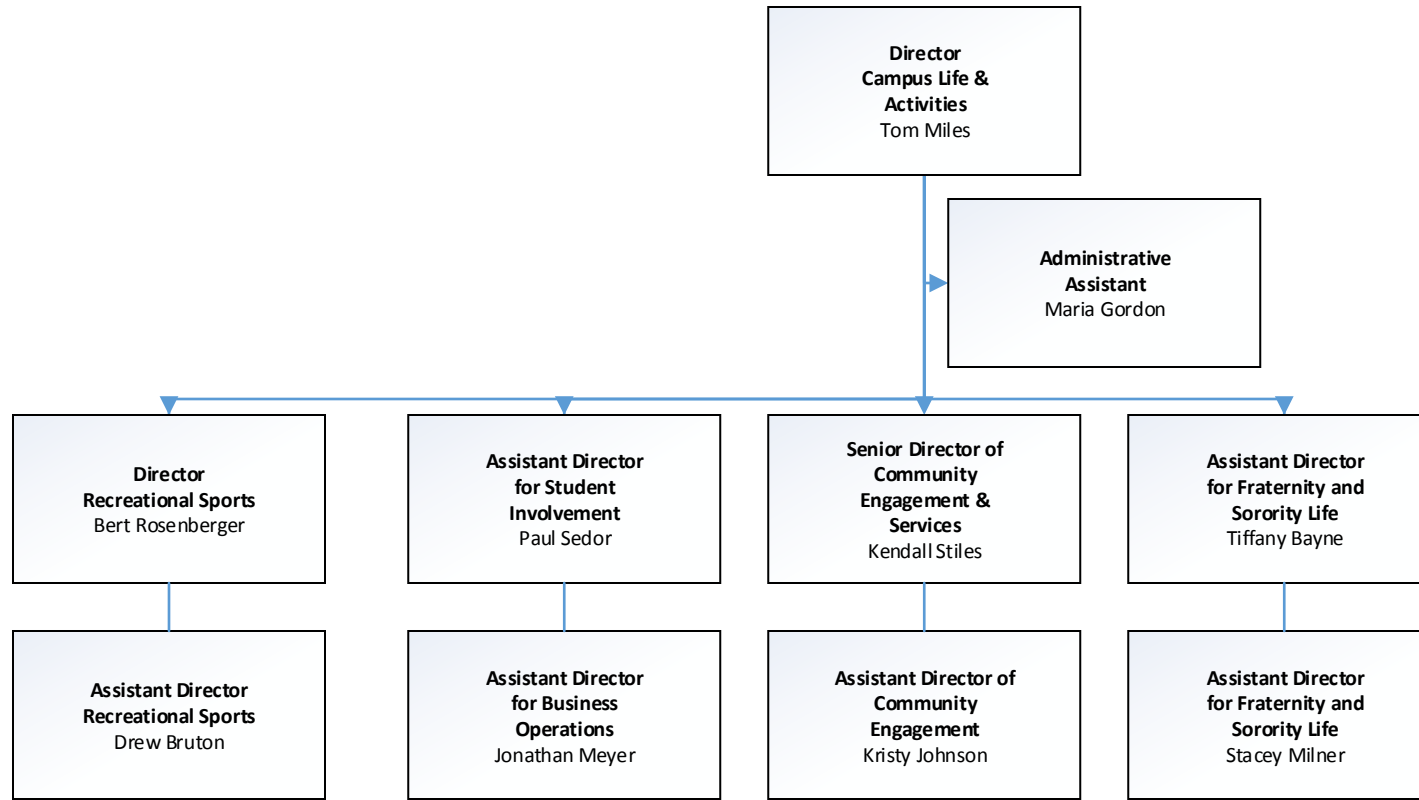


## *Office of Inclusive Excellence*





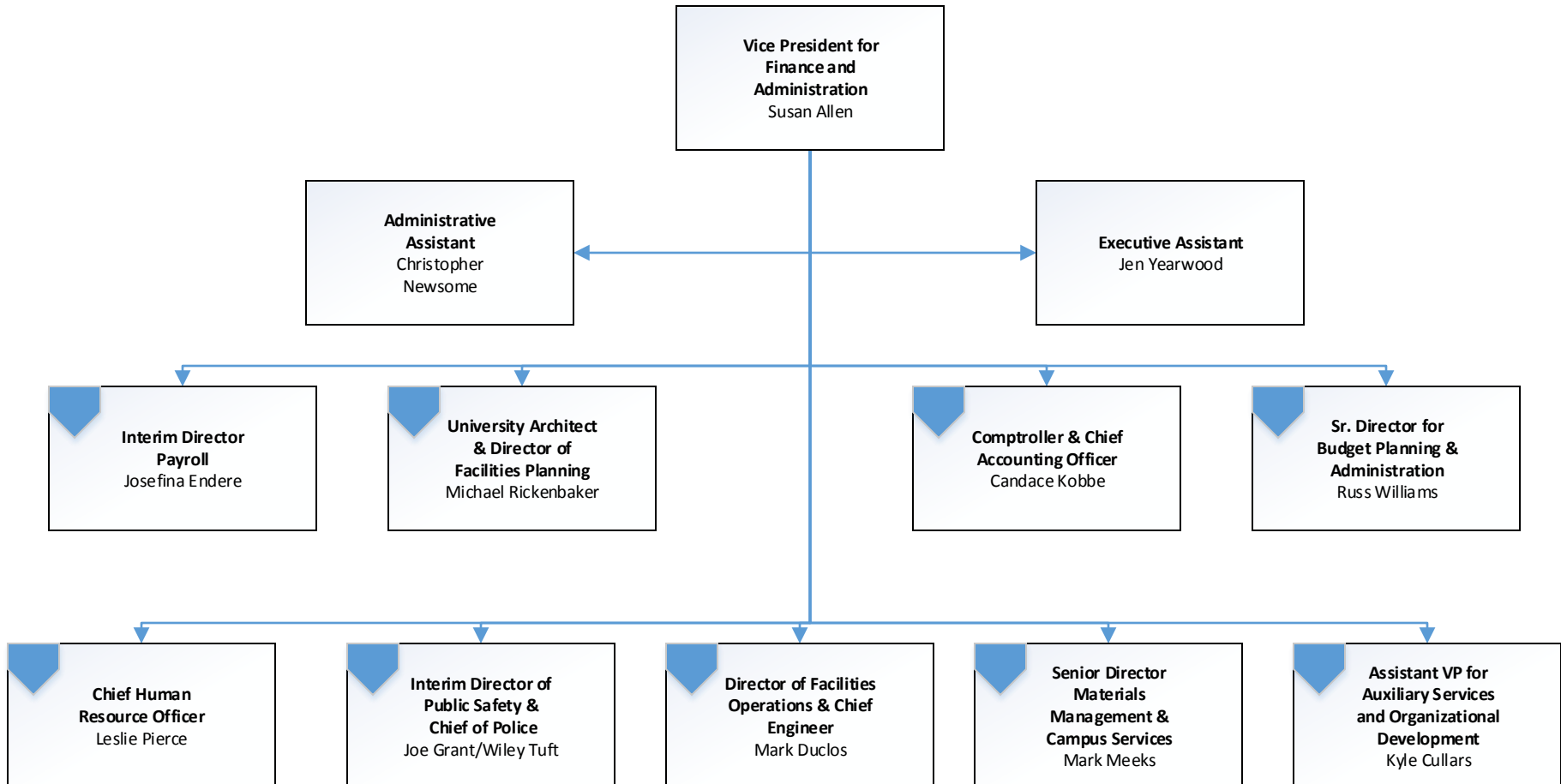
## *Campus Life*





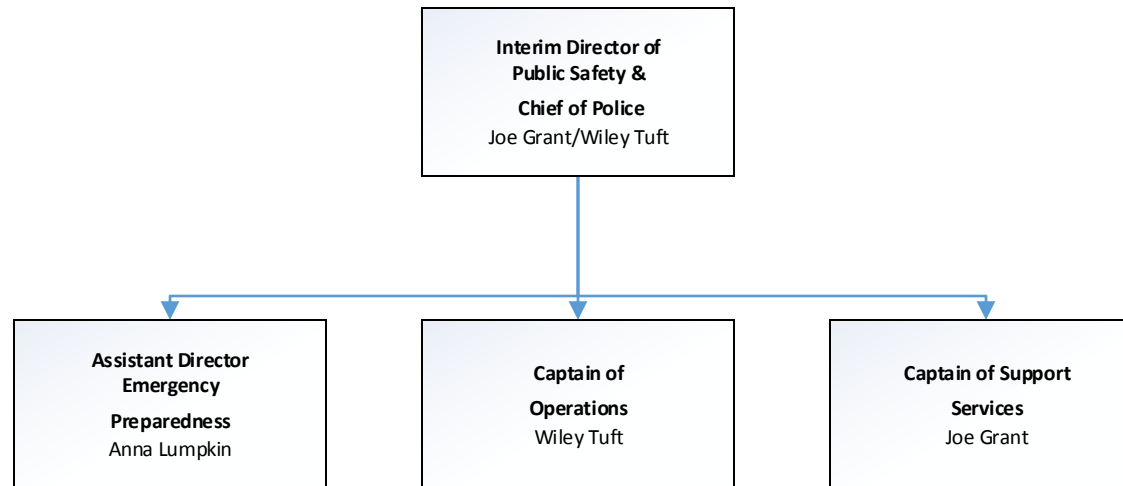


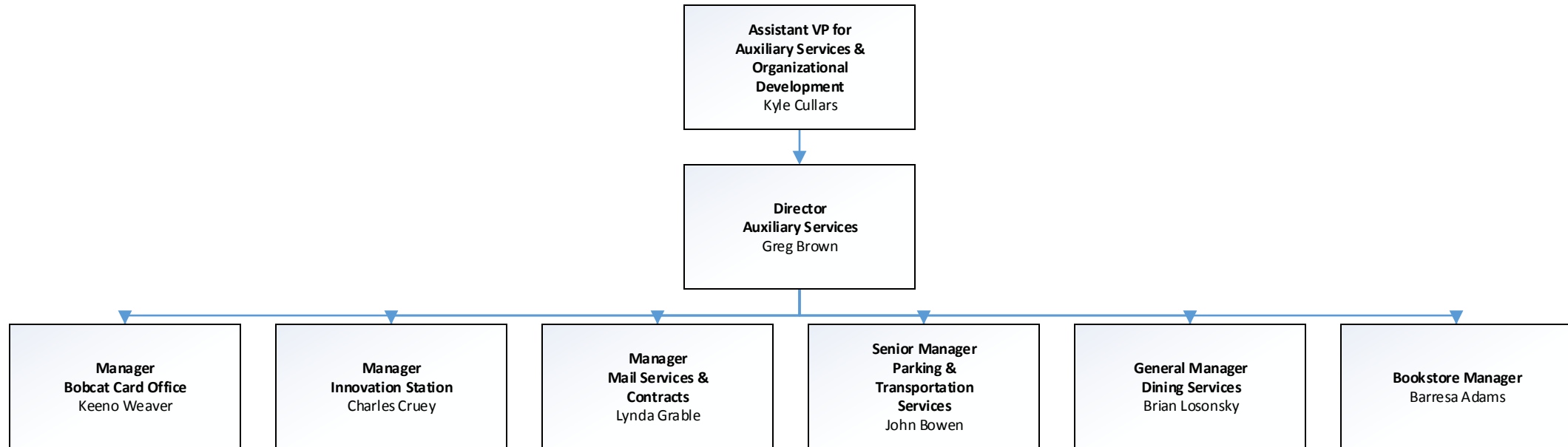
**GEORGIA COLLEGE**  
GEORGIA'S PUBLIC LIBERAL ARTS UNIVERSITY  
*Finance and Administration*





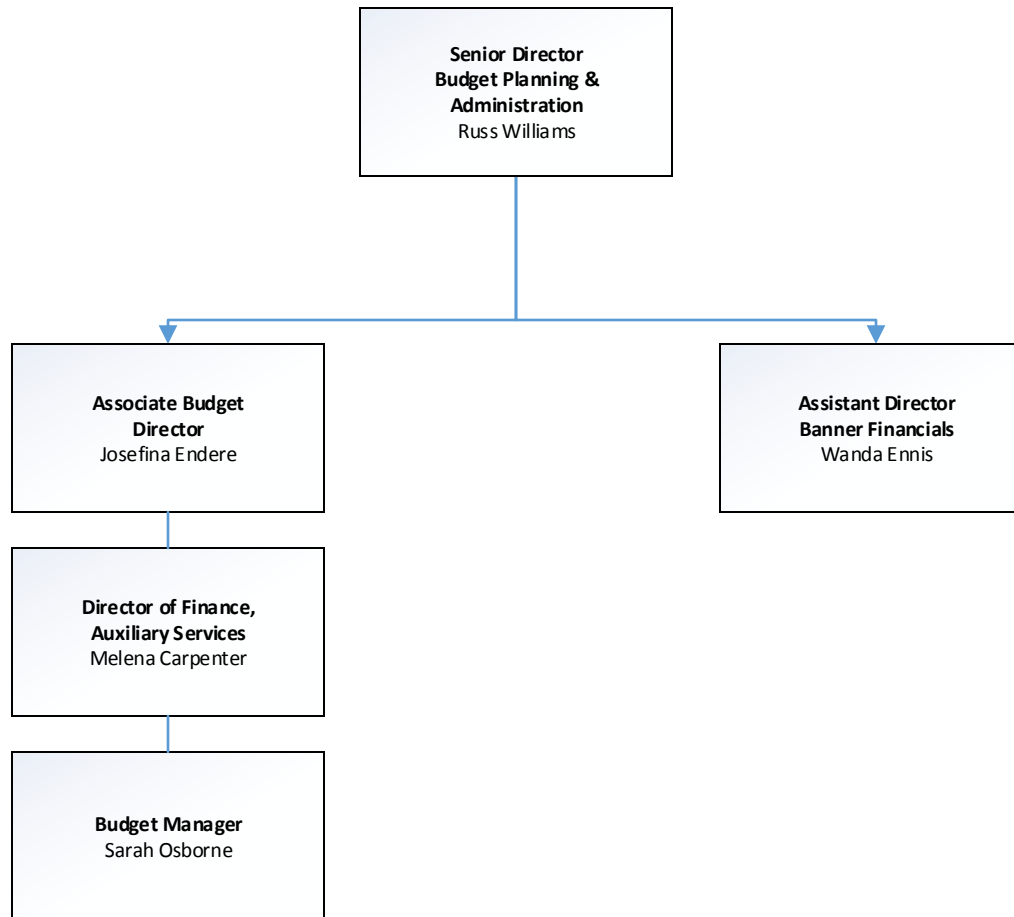
## *Public Safety*





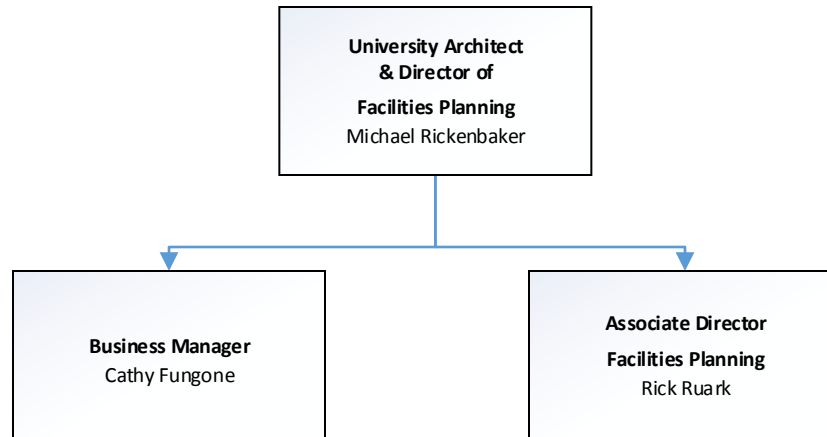


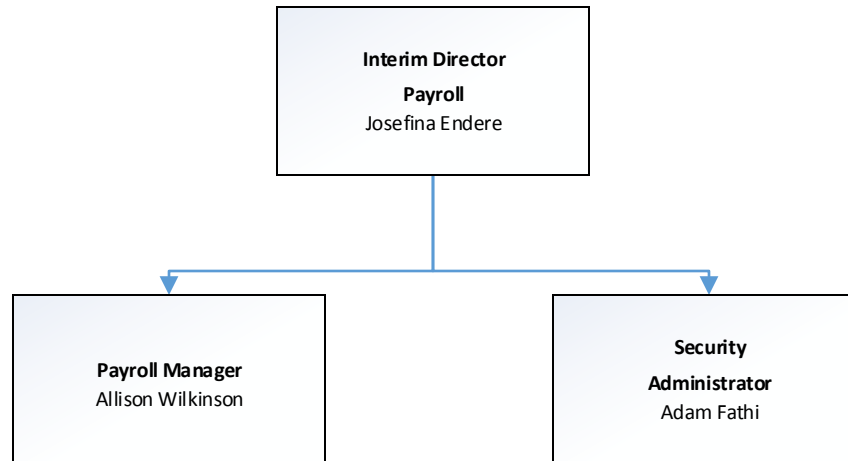
*Budget Planning & Administration*





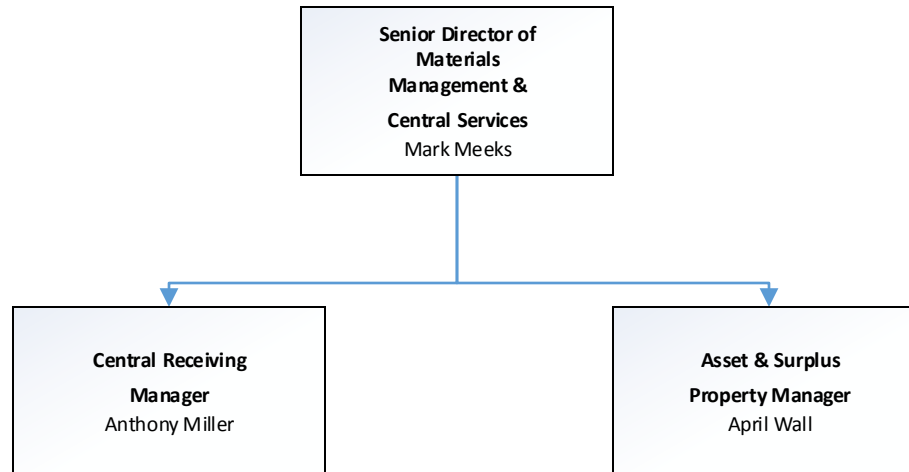
## *Facilities Planning*





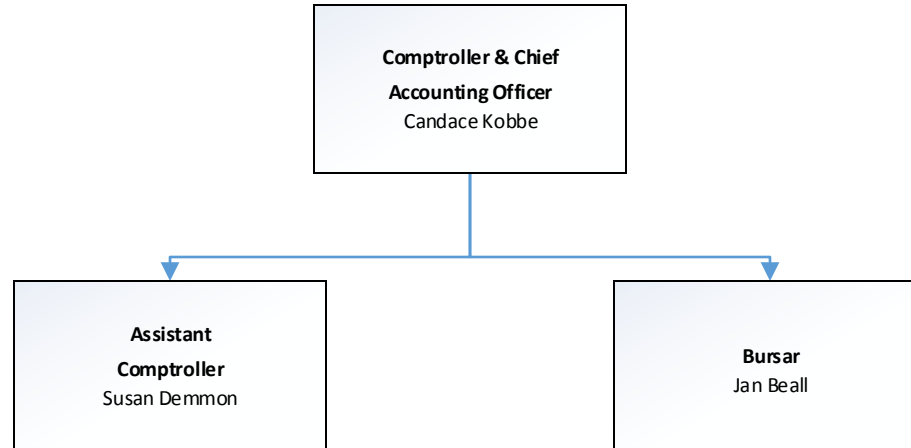


## *Materials Management & Campus Services*

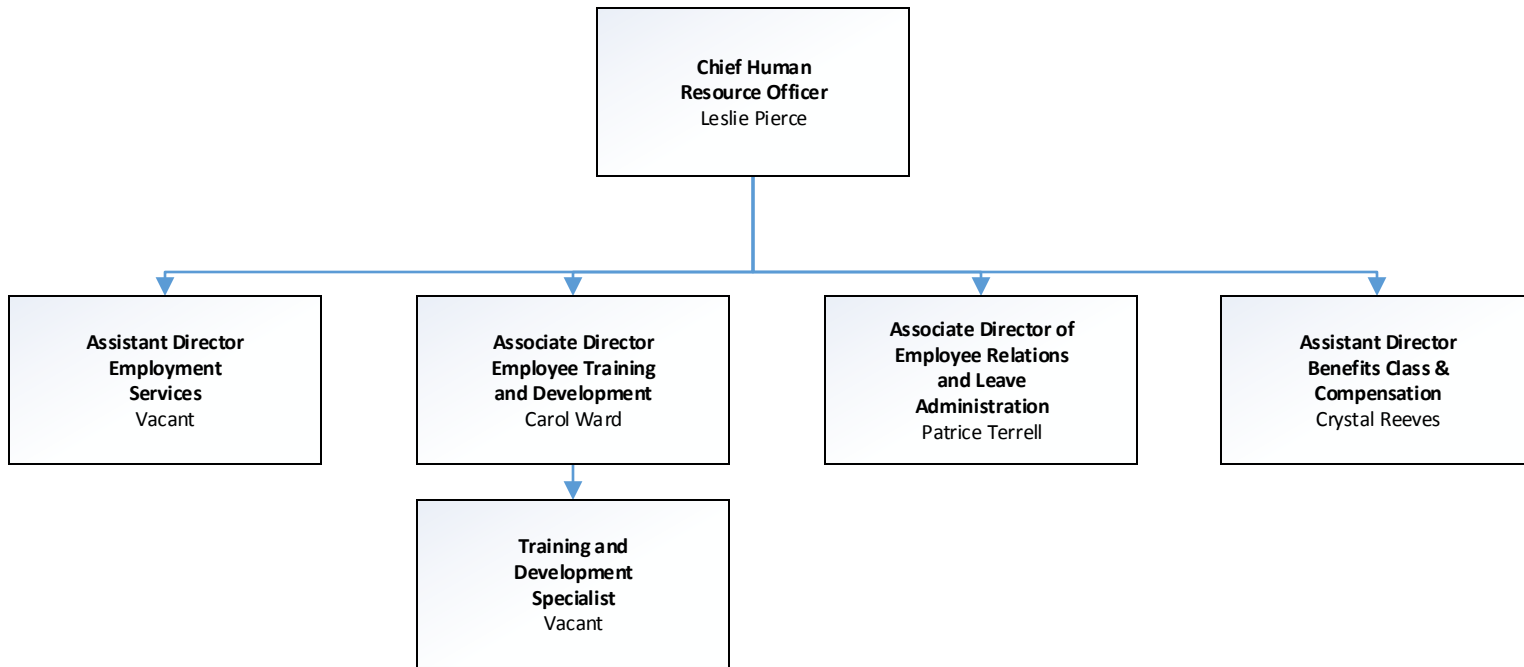




## *Comptroller & Accounting Office*

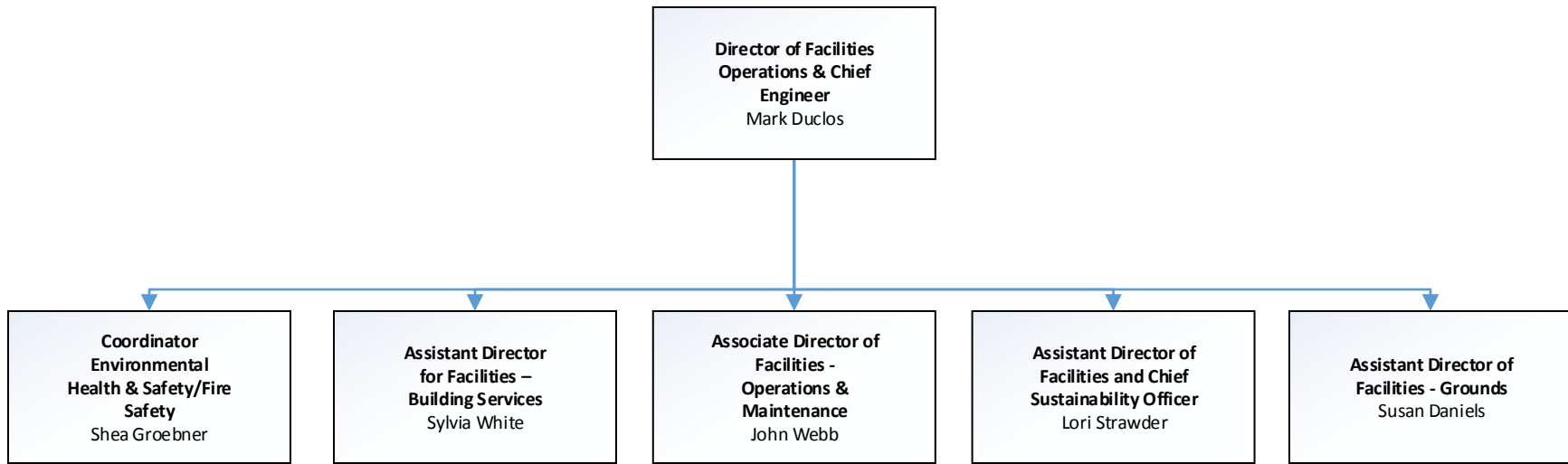






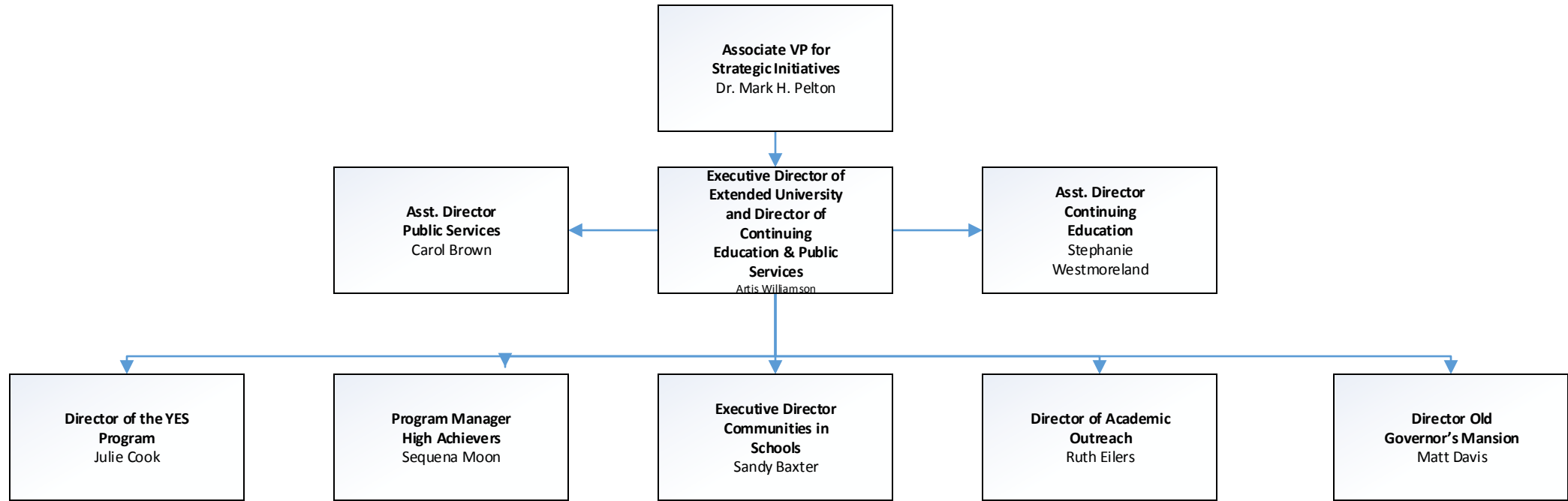


**GEORGIA COLLEGE**  
GEORGIA'S PUBLIC LIBERAL ARTS UNIVERSITY  
*Facilities Operations and Maintenance*



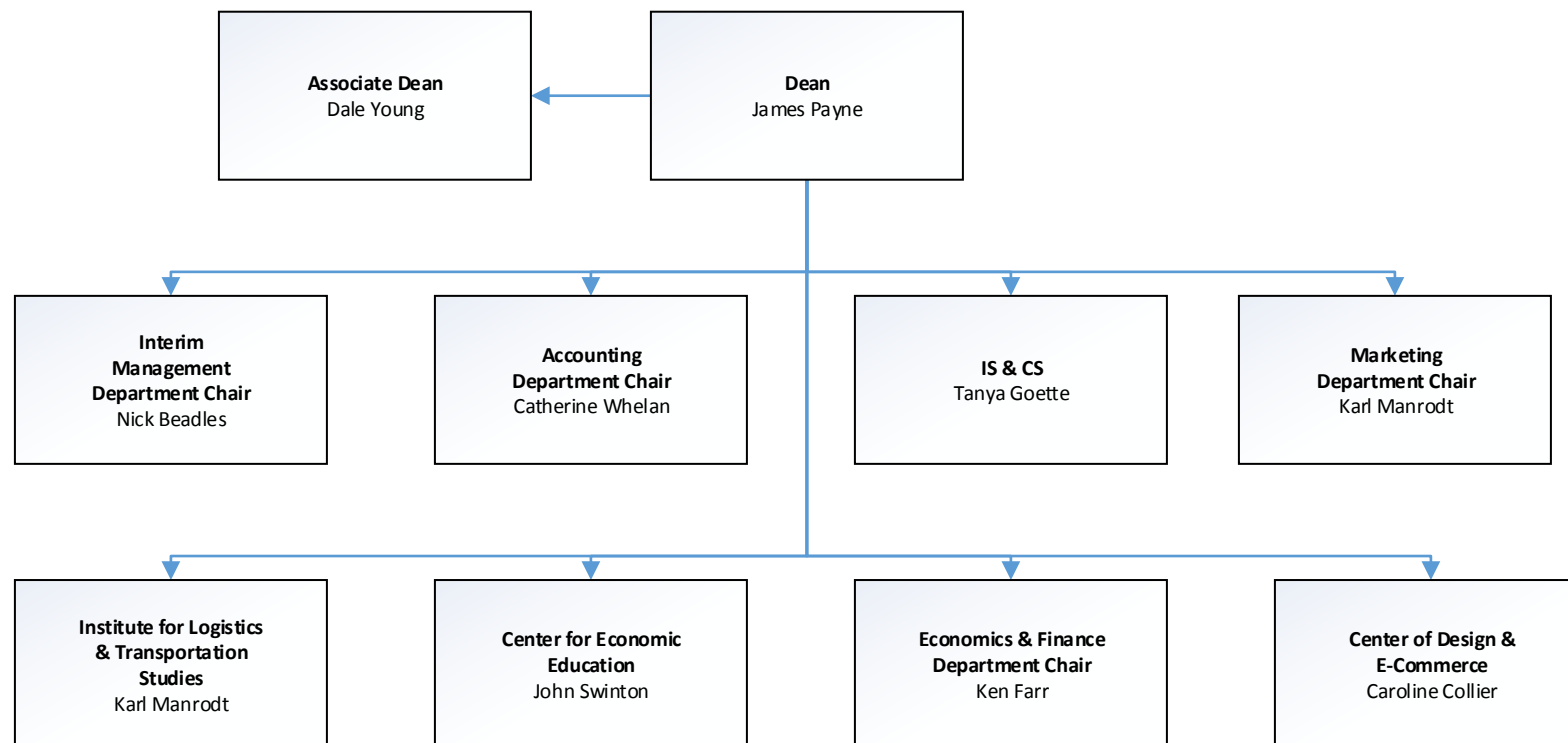


**GEORGIA COLLEGE**  
GEORGIA'S PUBLIC LIBERAL ARTS UNIVERSITY  
*Office of Strategic Initiatives*



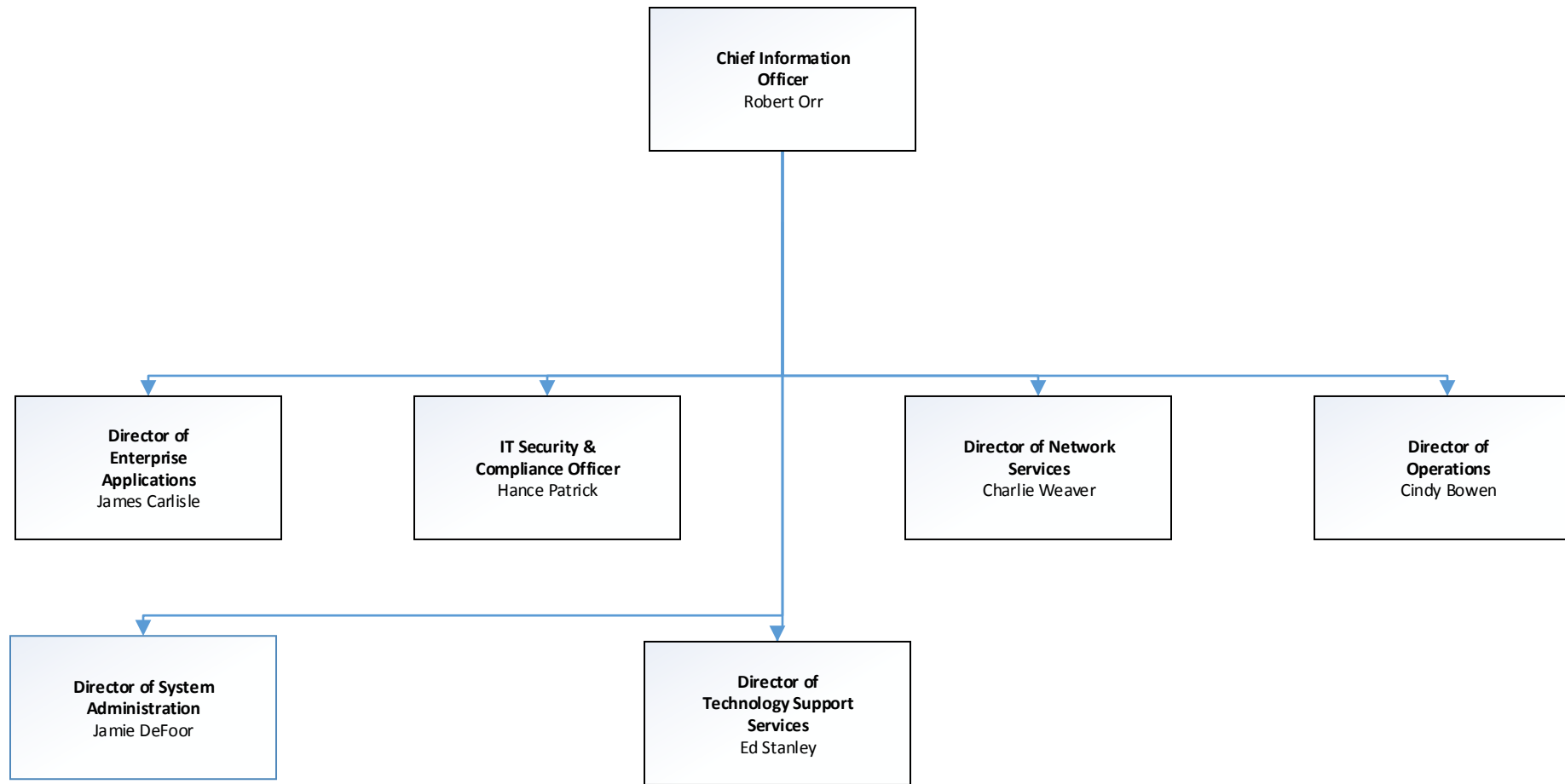


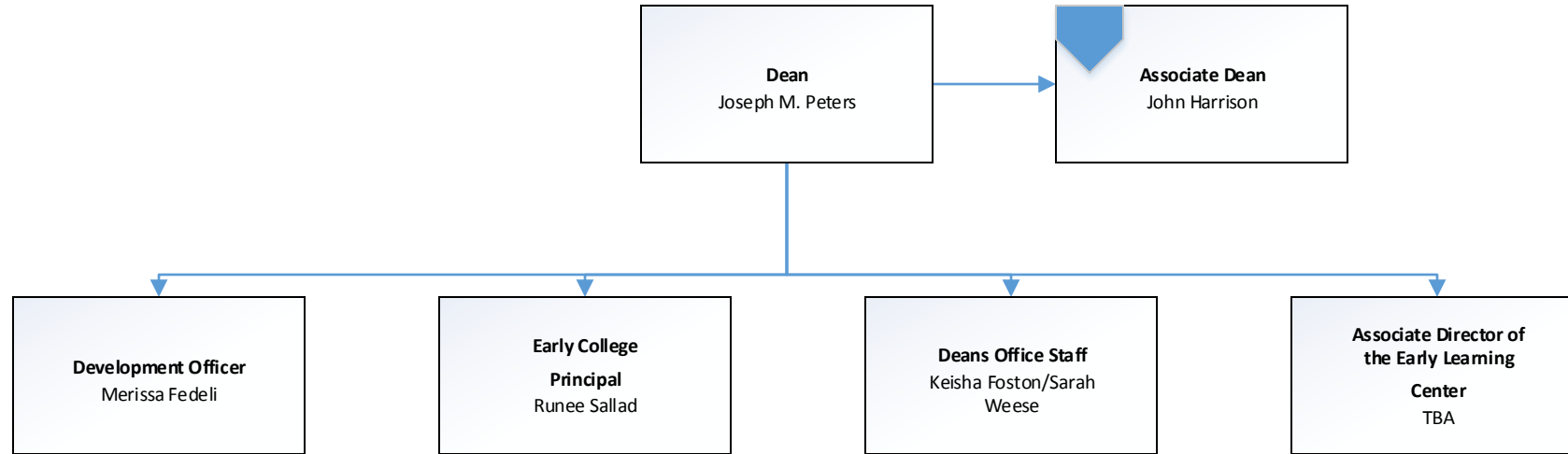
**GEORGIA COLLEGE**  
GEORGIA'S PUBLIC LIBERAL ARTS UNIVERSITY  
*The J. Whitney Bunting  
College of Business*

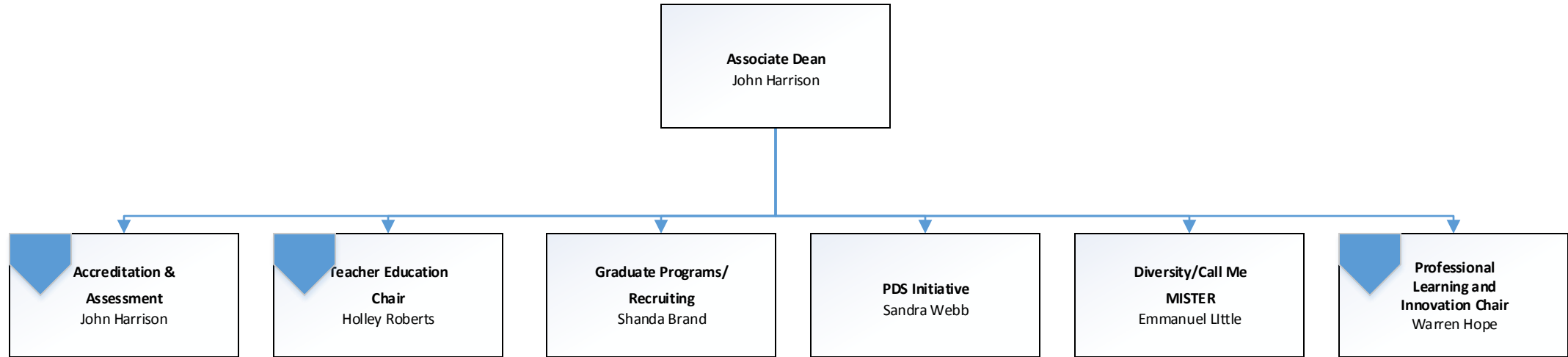




*Information Technology*

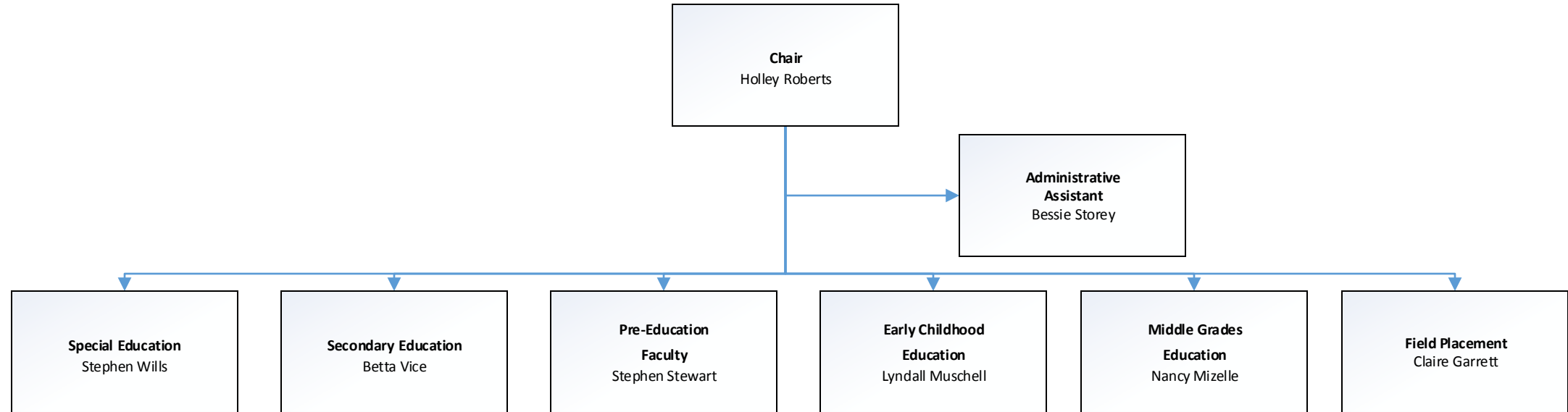








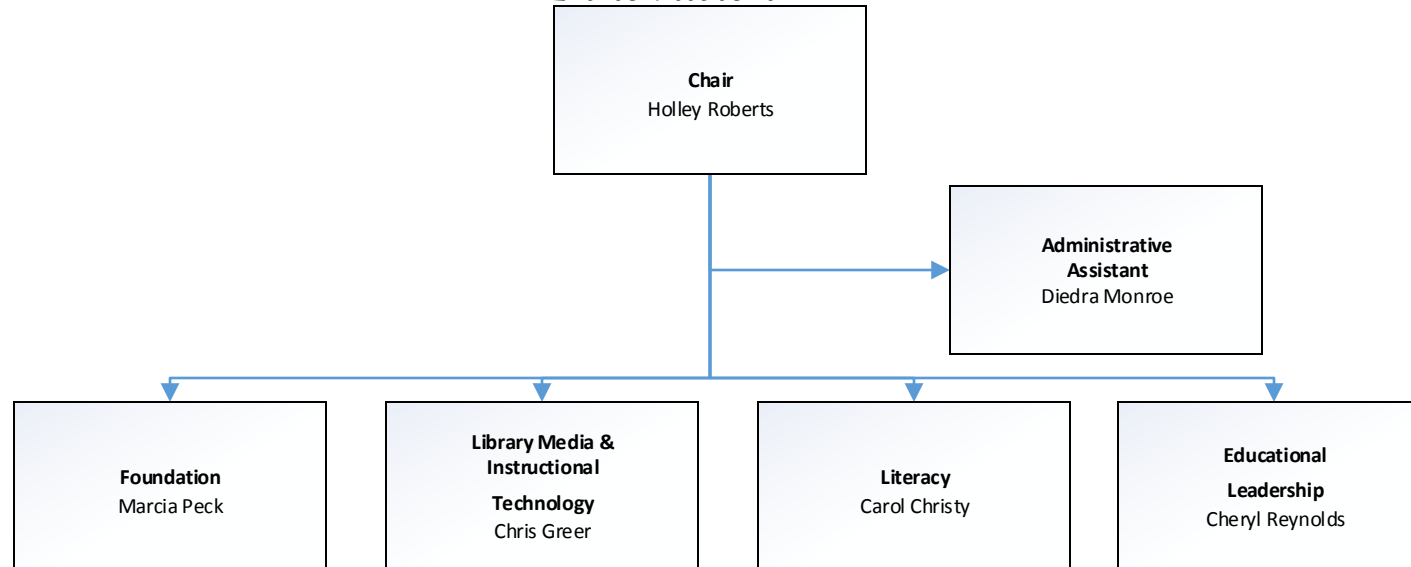
**GEORGIA COLLEGE**  
GEORGIA'S PUBLIC LIBERAL ARTS UNIVERSITY  
*Teacher Education*






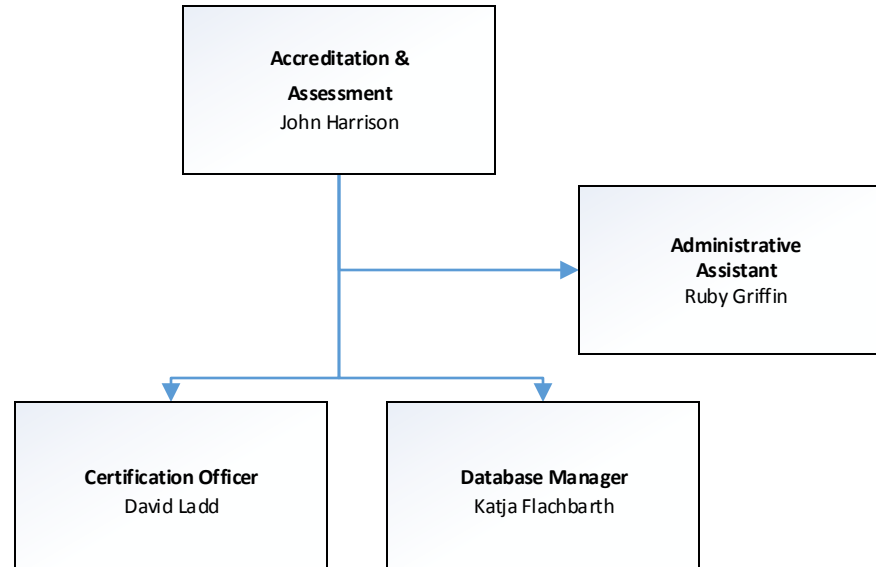


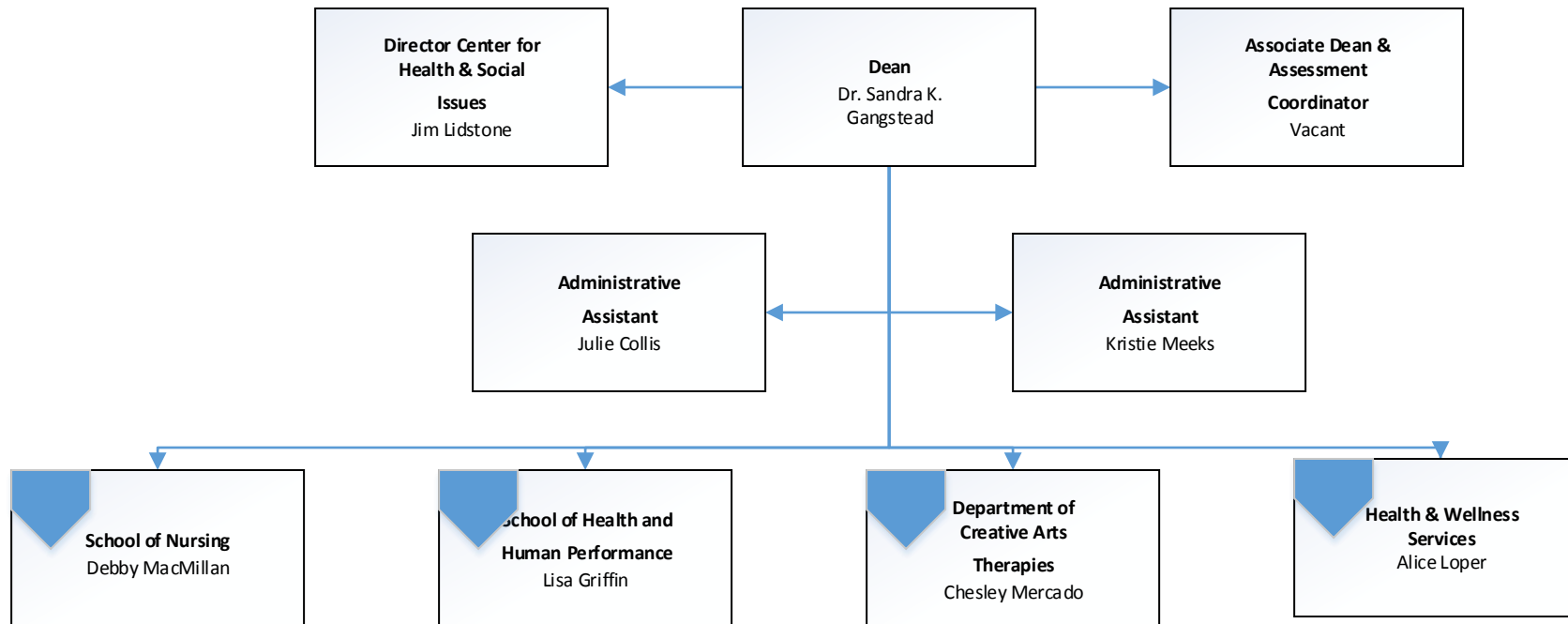
**GEORGIA COLLEGE**  
GEORGIA'S PUBLIC LIBERAL ARTS UNIVERSITY  
*Professional Learning and Innovation*

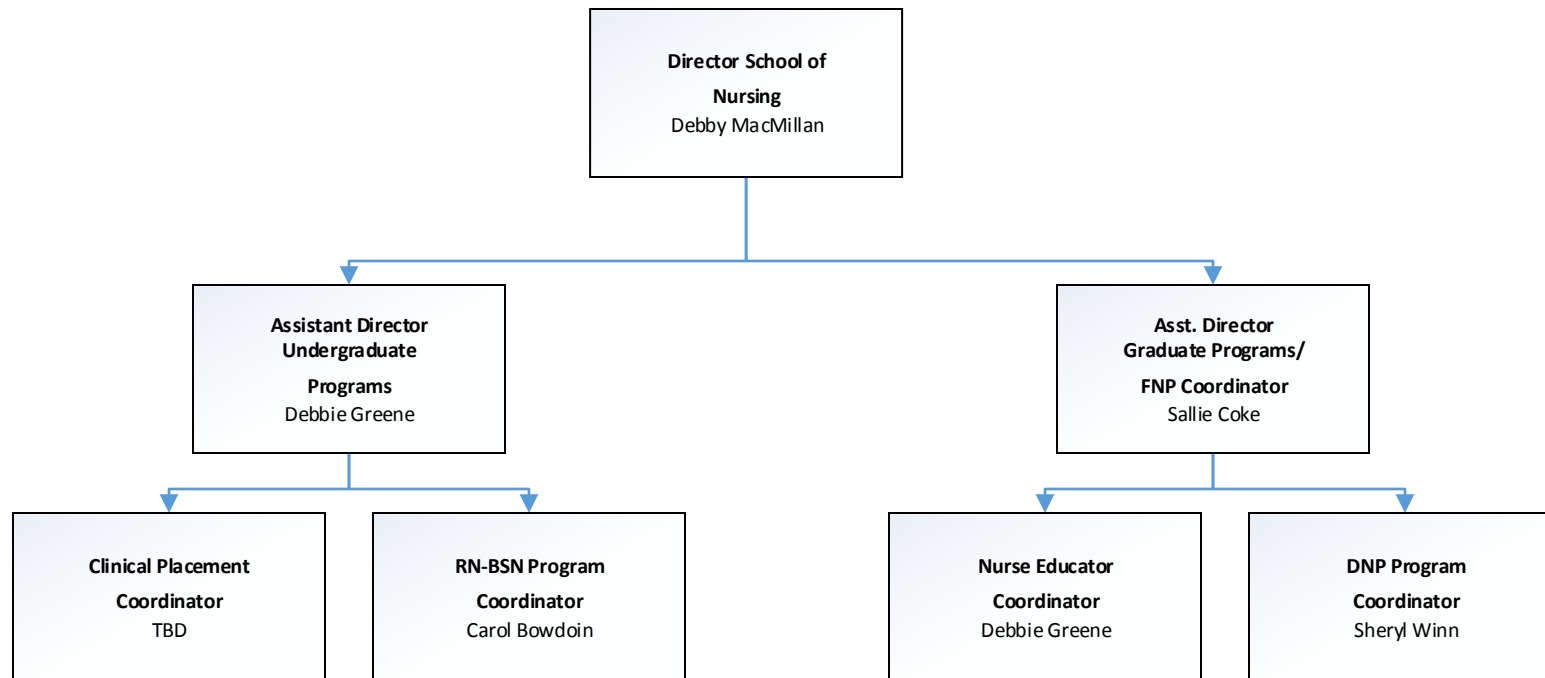




**GEORGIA  
COLLEGE**  
GEORGIA'S PUBLIC LIBERAL ARTS UNIVERSITY  
*Accreditation and Assessment*

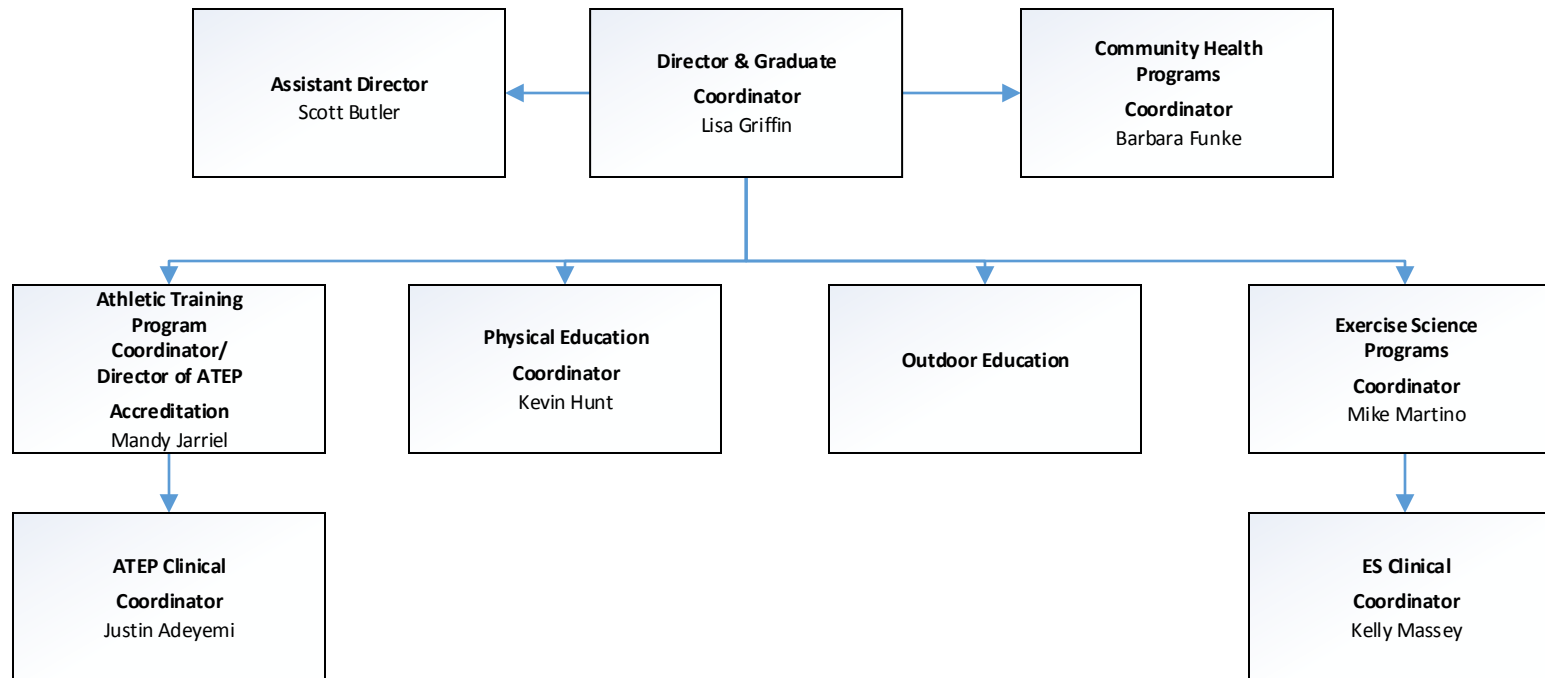






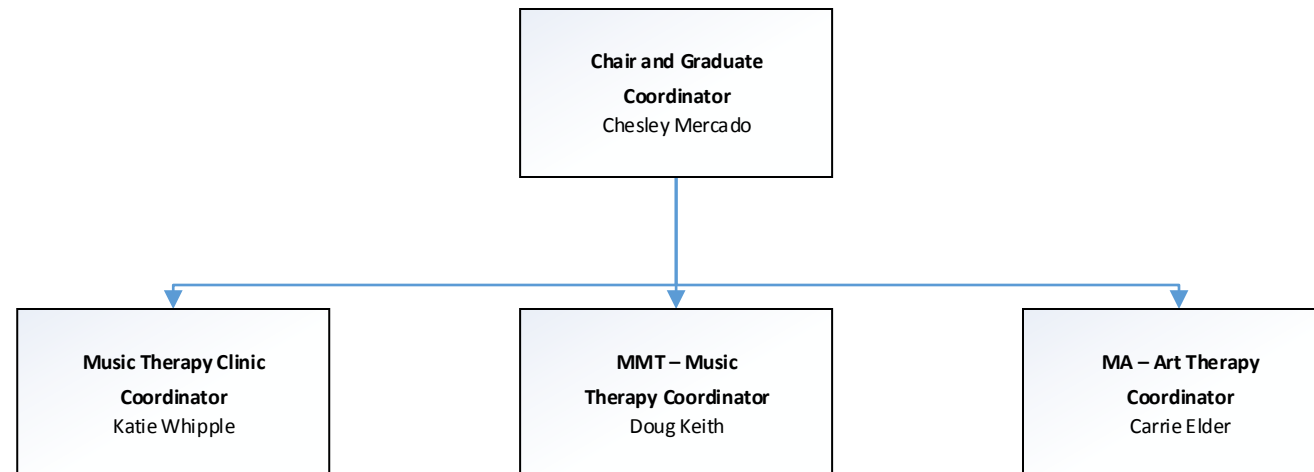


**GEORGIA COLLEGE**  
GEORGIA'S PUBLIC LIBERAL ARTS UNIVERSITY  
*School of Health and Human Performance*



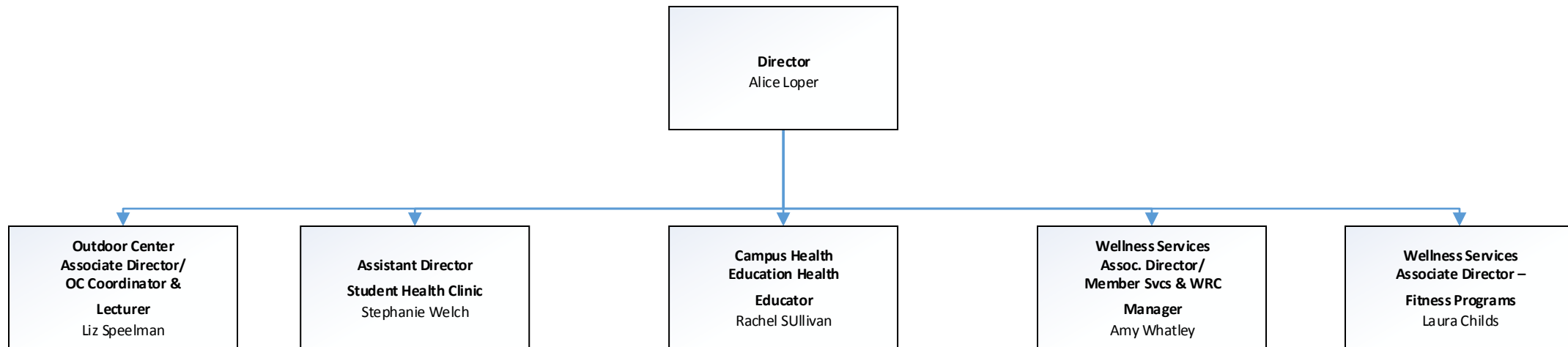


 **GEORGIA  
COLLEGE**  
GEORGIA'S PUBLIC LIBERAL ARTS UNIVERSITY  
*Department of Creative Arts  
and Therapies*



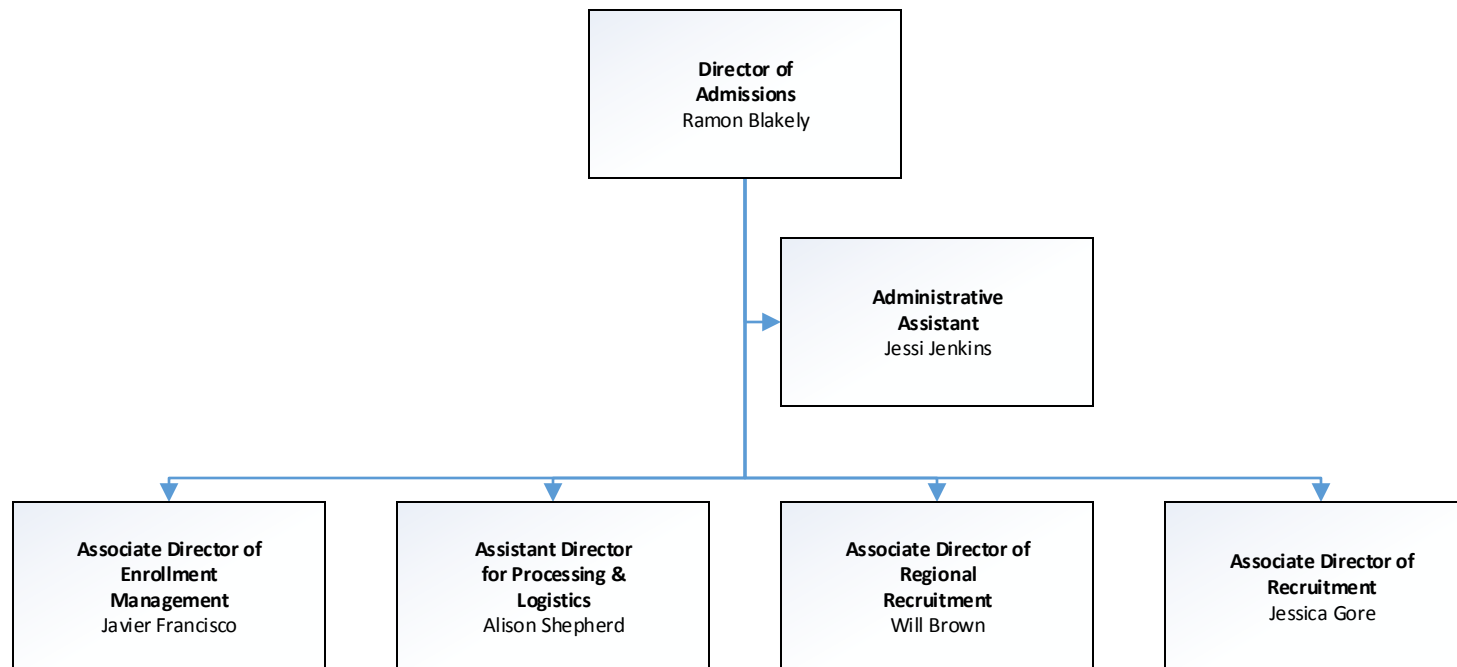


**GEORGIA  
COLLEGE**  
GEORGIA'S PUBLIC LIBERAL ARTS UNIVERSITY  
*Health & Wellness Services*





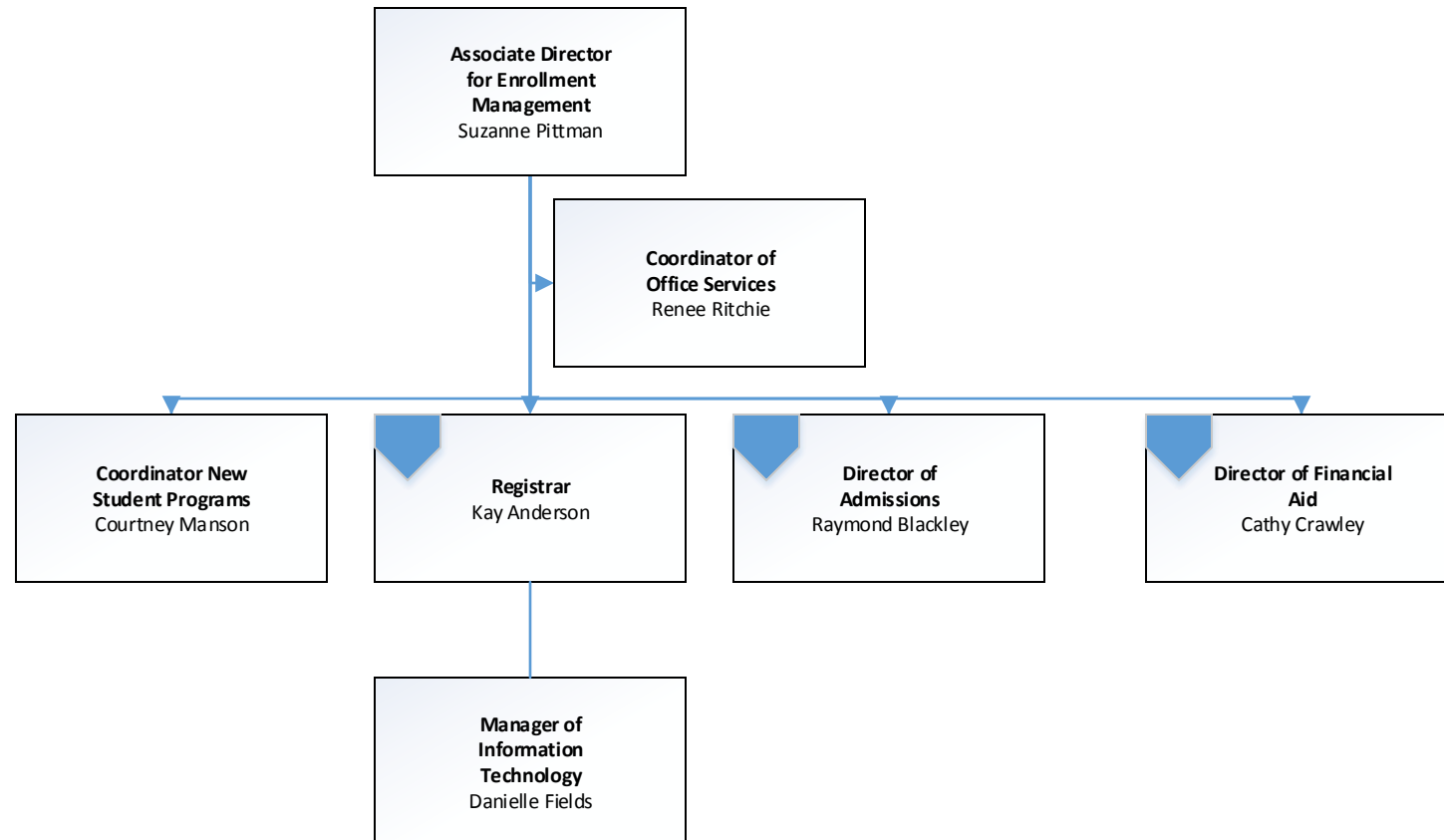
 **GEORGIA  
COLLEGE**  
GEORGIA'S PUBLIC LIBERAL ARTS UNIVERSITY  
*Office of Admissions*





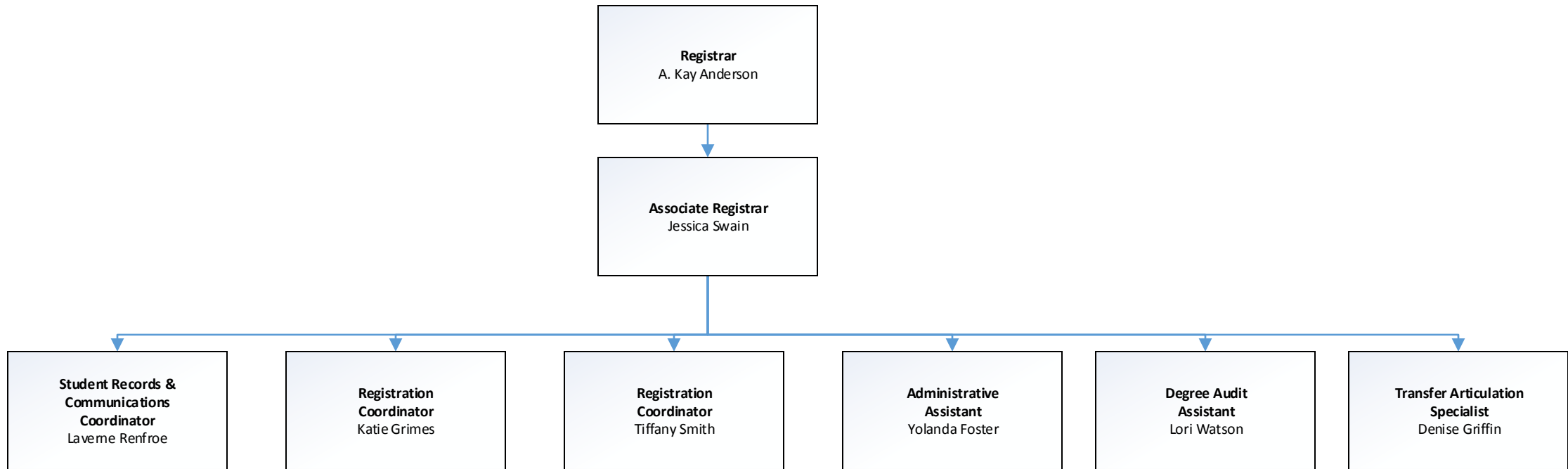


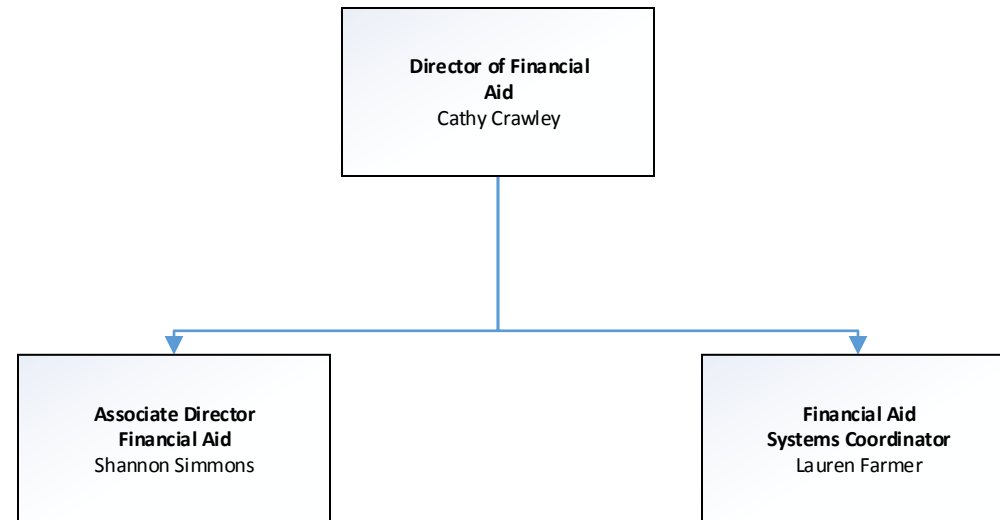
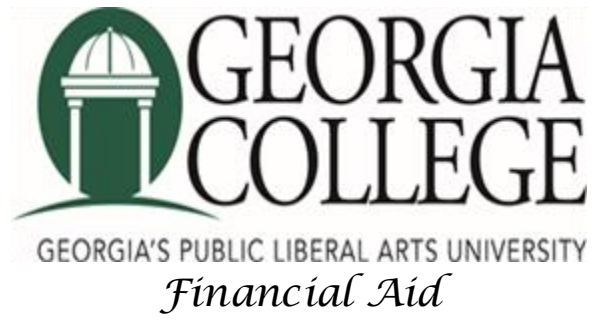
## *Enrollment Management*





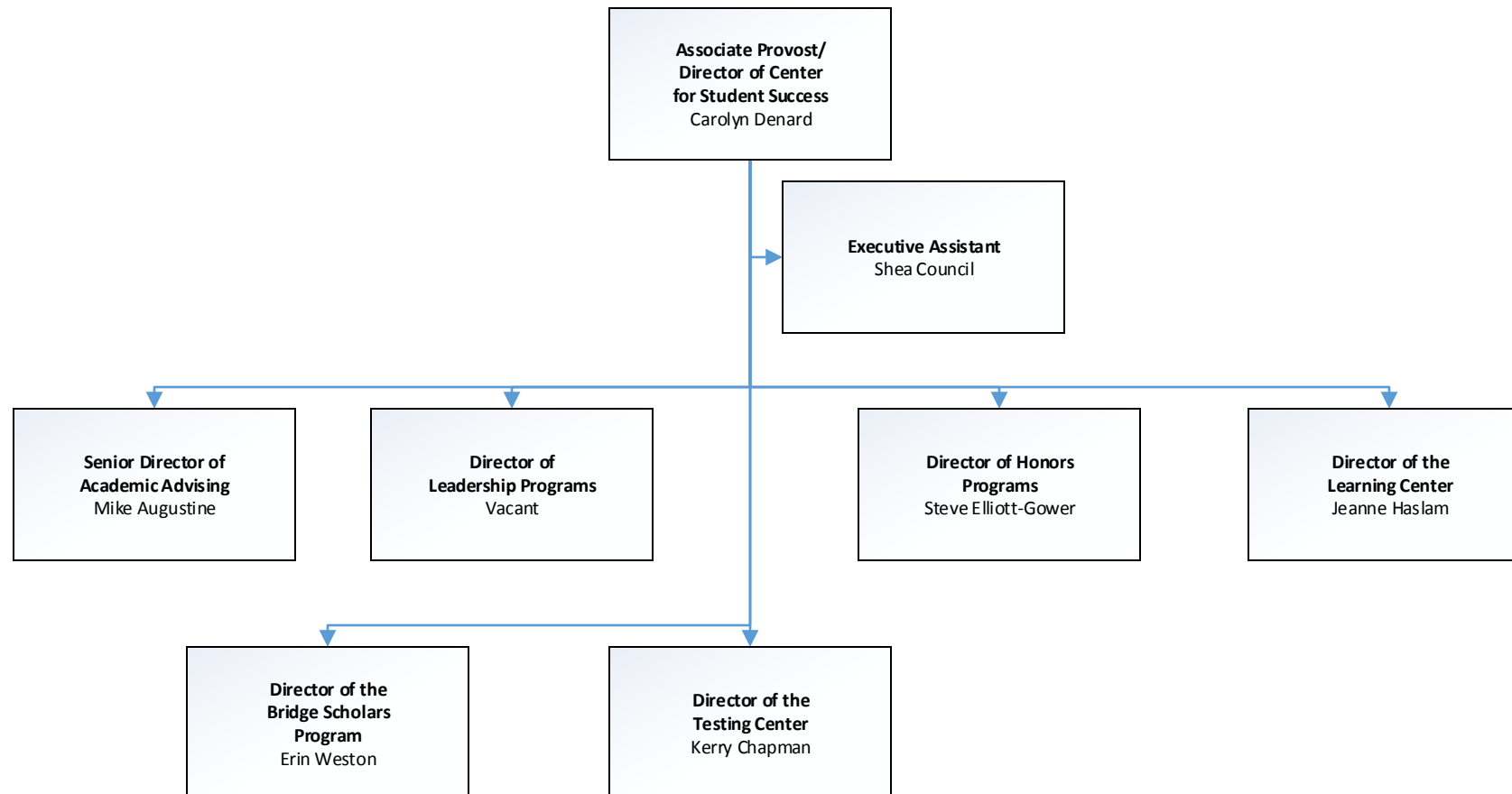
*Registrar*





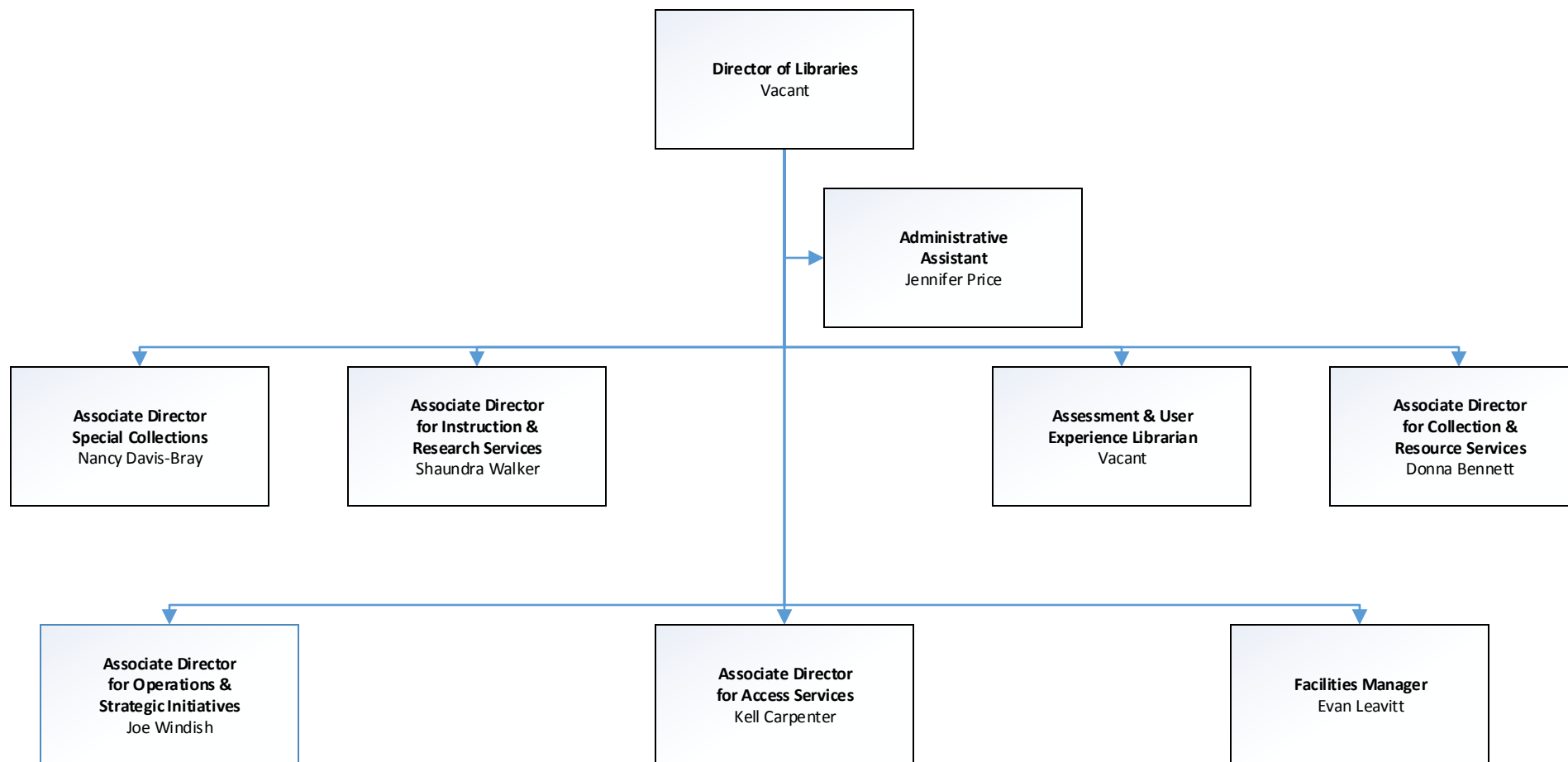


 **GEORGIA  
COLLEGE**  
GEORGIA'S PUBLIC LIBERAL ARTS UNIVERSITY  
*Center for Student Success*



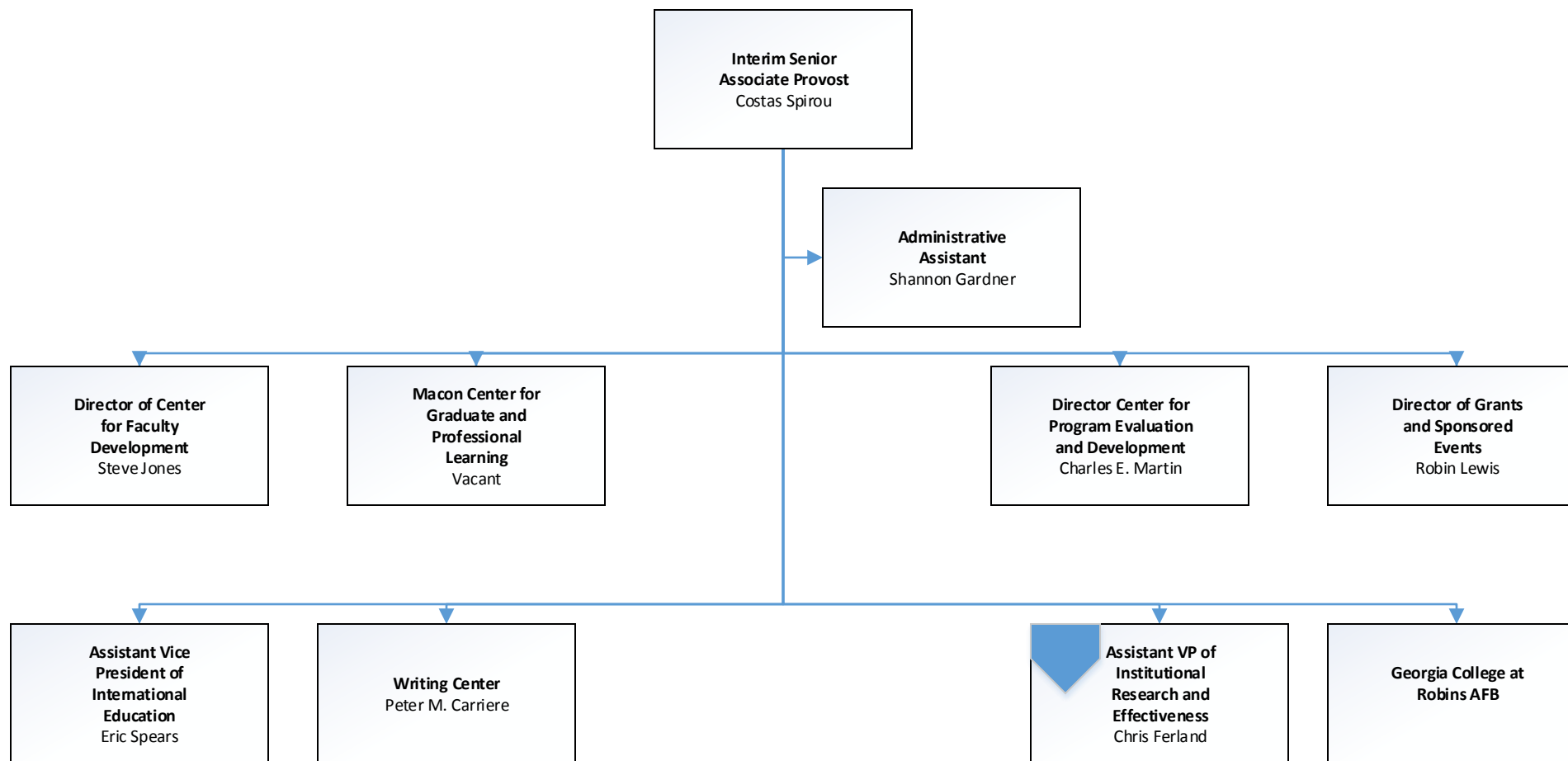


**GEORGIA COLLEGE**  
GEORGIA'S PUBLIC LIBERAL ARTS UNIVERSITY  
*Ina Dillard Russell Library*



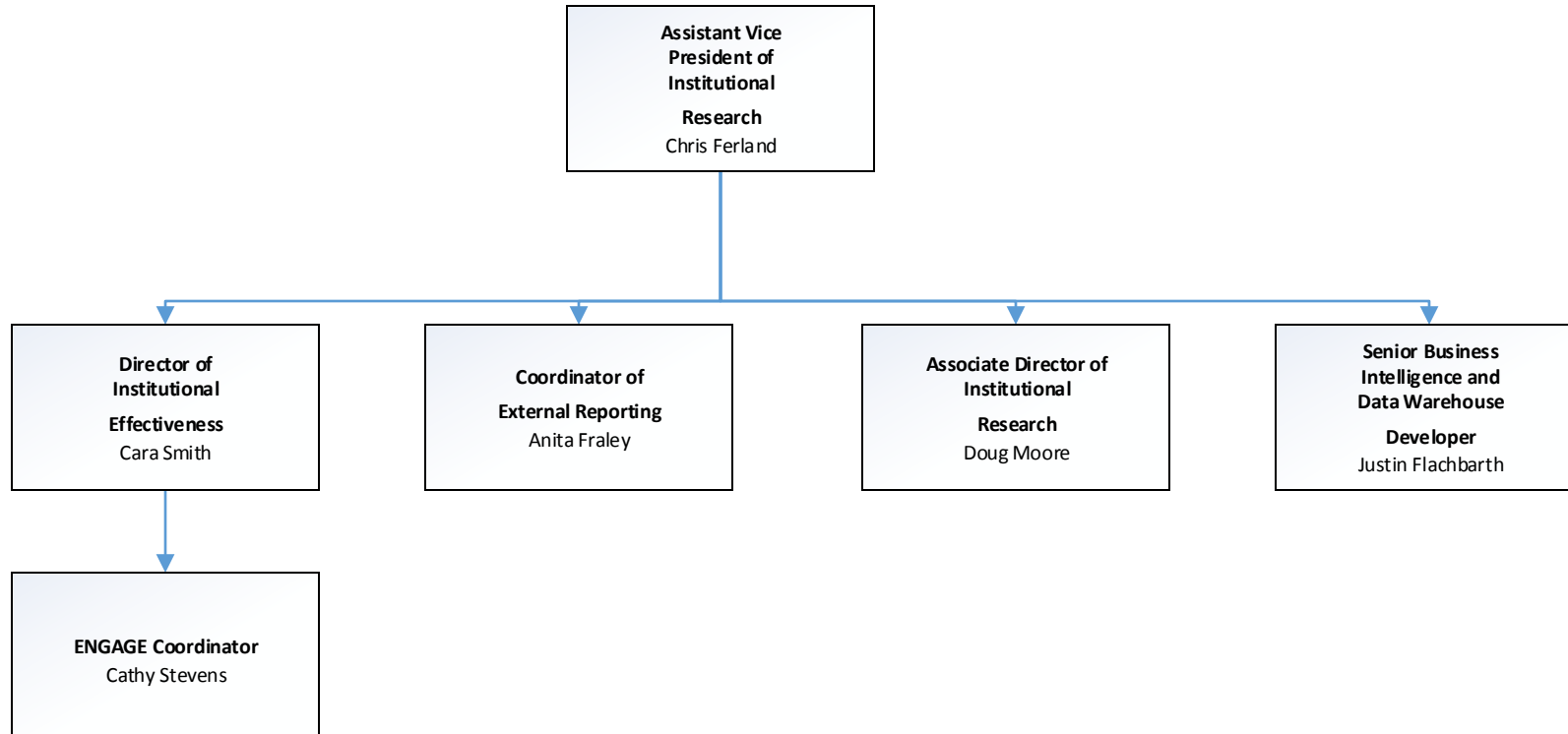


*Senior Associate Provost*





*Institutional Research & Effectiveness*





 **GEORGIA COLLEGE**  
GEORGIA'S PUBLIC LIBERAL ARTS UNIVERSITY  
*College of Arts & Sciences*

